

# PRODUCT INTRODUCTION

**Micro-precision motors**  
66 series, over 3,000 models



**Torque Motors**



**Servo Motors**



**Resolvers**



**Fans**



**Coreless Motors**



**Starter-Generators**

**Integrated Drive Units**

+



**Fuel Delivery Units**



**Rotary Table Units**



**Starter Units**

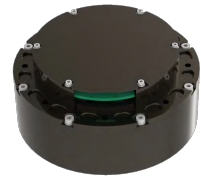


**Servos**



**Inertial Nav Products**

**Robotics**



**Robot Joint Modules**



**Frameless Torque Motors**



**Coreless Motors**



**Industrial Servo Motors**

# Product Advantages — Servo Motors



## Product Features

Compact structure, low speed, high torque, strong overload capability, fast response, excellent linearity, and low torque ripple.

## Product Advantages

- Torque ripple coefficient as low as 0.5%
- Time constant as low as 2 ms
- Closed-loop speed range: 0.001 r/min – 30,000 r/min
- Closed-loop speed accuracy up to 0.01%; position accuracy up to 0.0005°
- 100% domestically manufactured; some models replace Kollmorgen AKM series

## Key Specification

- Diameter range: 25mm~500mm
- Rated power: 10W~25kW
- Speed range: 200rpm~30000rpm

# Product Advantages — Motor Drives



## Product Features

- Compact structure, high power density, Control frequency upto 20kHz
- Fully digital triple-loop control. Supports incremental/ absolute encoders, resolvers, digital Hall sensors, and other positio sensors
- Supports multiple position interfaces: BiSS-C, SSI, Endat, etc.
- Supports UART, CANopen, Modbus, and custom protocols

## Product Advantages

- Graphical debugging software for easy tuning and diagnostics
- Supports multi-motor simultaneous drive

## Key Specification

- Voltage range: 12VDC~600VDC/12VAC~400VAC
- Output current: 0~300Arms 输出功率: 10w~50kw
- Current loop bandwidth up to1500Hz, current control resolution $\leq 3\text{mA}$
- Speed range: 0.001°/s~12000°/s
- Position control accuracy: 0.0005°



Contact us for details or  
 requiring custom configuration  
[info@zeiusa.com](mailto:info@zeiusa.com) +1 716-288-8317

### Permanent Magnet AC Servo Motor

Item Number	Factory Model Number	Supply Voltage (V AC)	Rated Power (kW)	Rated Torque (N.m)	Rated Speed (rpm)	Rated Current (A)	Peak Torque (N.m)	Peak Current (A)	Number of Pole Pairs	Weight (kg)	Dimensions (mm, excluding shaft extension and connector dimensions)
1	60SZ-028-Z	220	0.28	0.34	8000	1.6	1.3	6.3	3	0.9	58×58×103
2	60SZ-053-Z	220	0.53	0.64	8000	2.8	2.6	10.9	3	1.2	58×58×122
3	60SZ-061-Z	220	0.61	0.9	6500	2.8	3.6	11.1	3	1.5	58×58×141
4	60SZ-072-Z	220	0.72	0.86	8000	4.3	3.6	17.2	3	1.5	58×58×141
5	60SZ-083-Z	220	0.83	1	8000	3.9	4.5	15.6	3	1.8	58×58×160
6	70SZ-056-Z	220	0.56	0.9	6000	3	3.8	12	4	1.7	70×70×118
7	70SZ-099-Z	220	0.99	1.35	7000	5.5	6.9	22	4	2.4	70×70×149
8	70SZ-120-Z	220	1.22	2.1	5500	5.6	9.7	22.5	4	3	70×70×180
9	85SZ-089-Z	220	0.89	1.4	6000	5.6	6	22.4	5	2.6	84×84×127
10	85SZ-130-Z	220	1.28	2	6000	8.4	10.9	33.7	5	3.6	84×84×156
11	110SZ-110-Z	220	1.09	1.7	6000	11.9	11.4	35.7	5	4.5	108×108×136
12	110SZ-220-Z	220	2.2	4.68	4500	13.1	20.7	39.4	5	6.1	108×108×167
13	110SZ-260-Z	220	2.66	5	5000	19.1	28.1	57.4	5	7.7	108×108×198
14	110SZ-320-Z	220	3.19	8.7	3500	17.8	35.4	53.4	5	9.3	108×108×229
15	110SZ-270-Z	380	2.71	10.36	2500	12.5	34.8	37.5	5	9.3	108×108×229
16	120SZ-075-Z	220	0.75	3.57	2000	5	10.7	21	4	5.1	120×120×147
17	130SZ-100-Z	220	1	4.8	2000	5.6	14.4	24	4	7.2	130×130×156
18	130SZ-150-Z	220	1.5	7.15	2000	9.4	21.5	40	4	8.9	130×130×181
19	130SZ-200-Z	220	2	9.54	2000	12.3	28.5	52	4	11.1	130×130×206
20	130SZ-250-Z	220	2.5	11.8	2000	14	35.5	60	4	13.3	130×130×231
21	130SZ-300-Z	220	3	14.3	2000	17.8	42.9	76	4	15.1	130×130×256
22	150SZ-350-Z	220	3.5	16.6	2000	18.7	50	80	4	17	150×150×223
23	150SZ-400-Z	220	4	18.8	2000	23.4	56.4	100	4	19.6	150×150×243
24	160SZ-490-Z	640dc	4.88	15.5	3000	13.6	62.6	40.9	5	15.9	158×158×235
25	175SZ-450-Z	220	4.5	21.4	2000	26.2	64.3	111	4	22.5	176×176×206
26	175SZ-500-Z	220	5	23.8	2000	28	71.4	120	4	26.5	176×176×226