



High quality, Reliable ,Compact

Hydraulic motor

Hydraulic pump

Travel drives

Transmission drives

Slewing drives

Gearbox

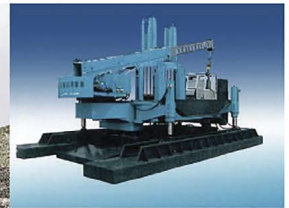
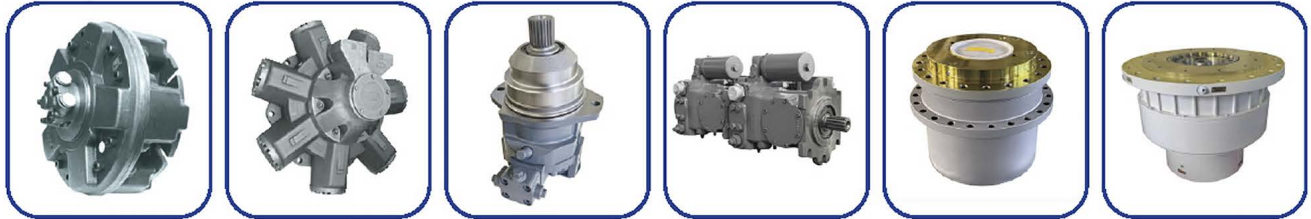




The company founded in October 1996, covers a total area of 133,333 sqm, with building area of 100,000 sqm. The register capital is USD 15,000,000. The company has 400 employees now.

The company is specialize in manufacturing hydraulic pumps, hydraulic motors, winches, planetary reducers, slewing drives and whole set of hydraulic systems. These patented products are widely used in construction machinery, petroleum, coal mining, geological prospecting, marine, metallurgical, light industry, agriculture, and environmental protection. Our products are exported to Southeast Asia, Middle East, USA, UK, Italy, the Netherlands, Australia, Brazil, India, Russia, Austria and so on.

Products & Applications





Products & Applications

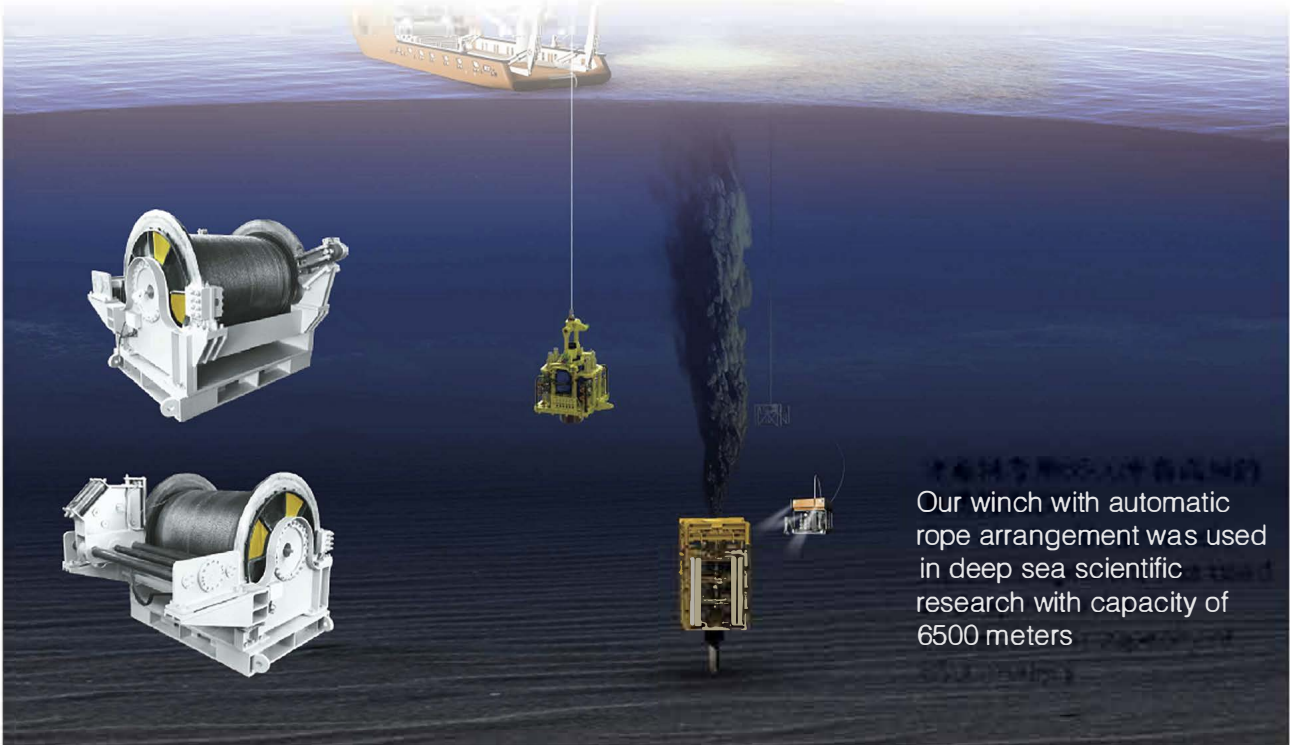




Products & Applications



Steel strand which is applied to the construction project of the world's first cross suspension bridge-Chanak Kale Bridge in Turkey

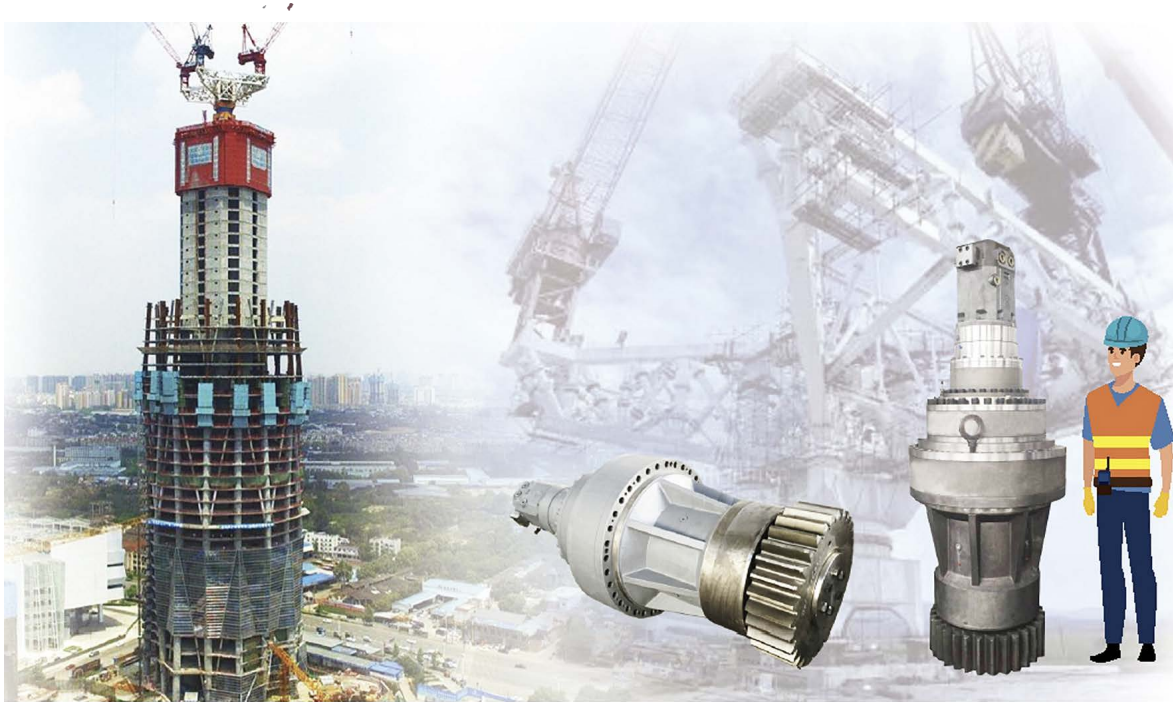


Our winch with automatic rope arrangement was used in deep sea scientific research with capacity of 6500 meters



Products & Applications

Provide transmission drivers hydraulic power packs and electrical control facilities for the first "multi-crane slewing platform" in the world



Provide a manned winch for the fire ladder truck
Provide wave compensation manned winches for medical vessels such as the "Peace Ark"





CONTENTS

■ IA6V Series Axial Piston Variable Displacement Motor	01-02
<hr/>	
■ IA4VG Series Axial Piston Variable Displacement Pump	03-05
<hr/>	
■ IGC Series Planetary Gearbox by Casing Rotating	06-30
<hr/>	
■ IGC-J Series Planetary Gearbox by Axial Rotating	31-33
<hr/>	
■ IGC-BB Series Planetary Gearbox with Dual Brakes	34-37
<hr/>	
■ IYH Series Hydraulic Slewing Drive	38-41
<hr/>	
■ IGH Series Hydraulic Slewing Drive	42-44
<hr/>	



IA6V Series Axial Piston Variable Displacement motor

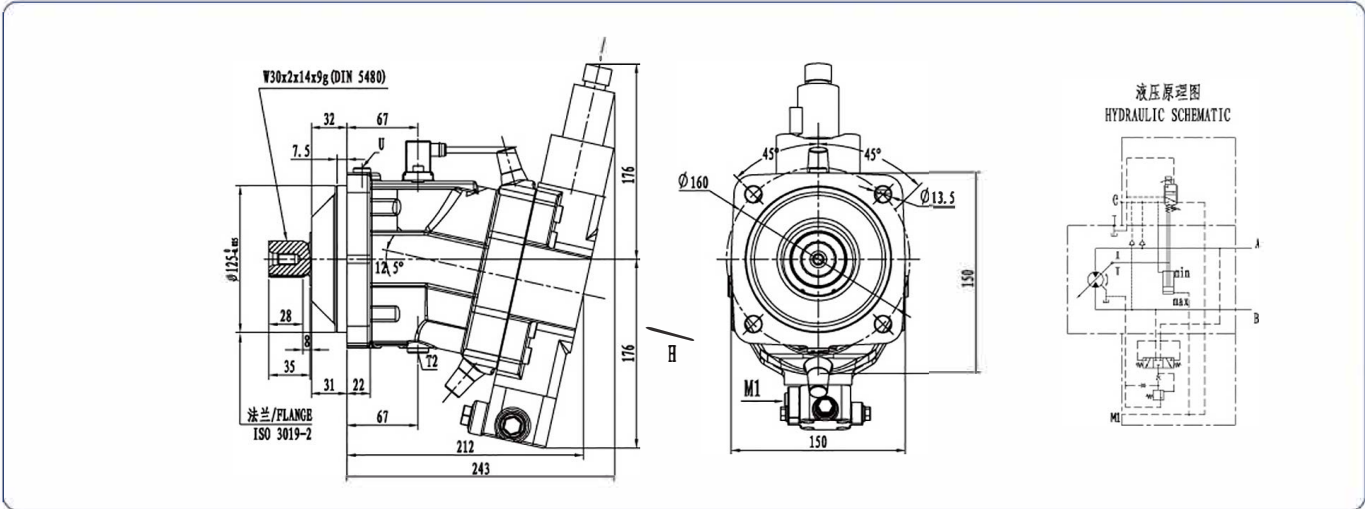
Standard Features

- The Variable motor with axial tapered piston rotary group of bent axis design, for hydrostatic drives in open and closed circuits
- The displacement is infinitely variable from V_{gmax} to $V_{gmin}-0$
- The output speed is depend on the flow of the pump and the displacement of the motor
- The torque increases with the pressure differential between the high and low pressure side and with increasing displacement
- Hydrostatic transmission can be performed in a wide control range
- A variety of control devices are available
- Compact and stable motor for long time life
- High power density
- Good startup characteris

Please Read Carefully The Specifications Before Selection

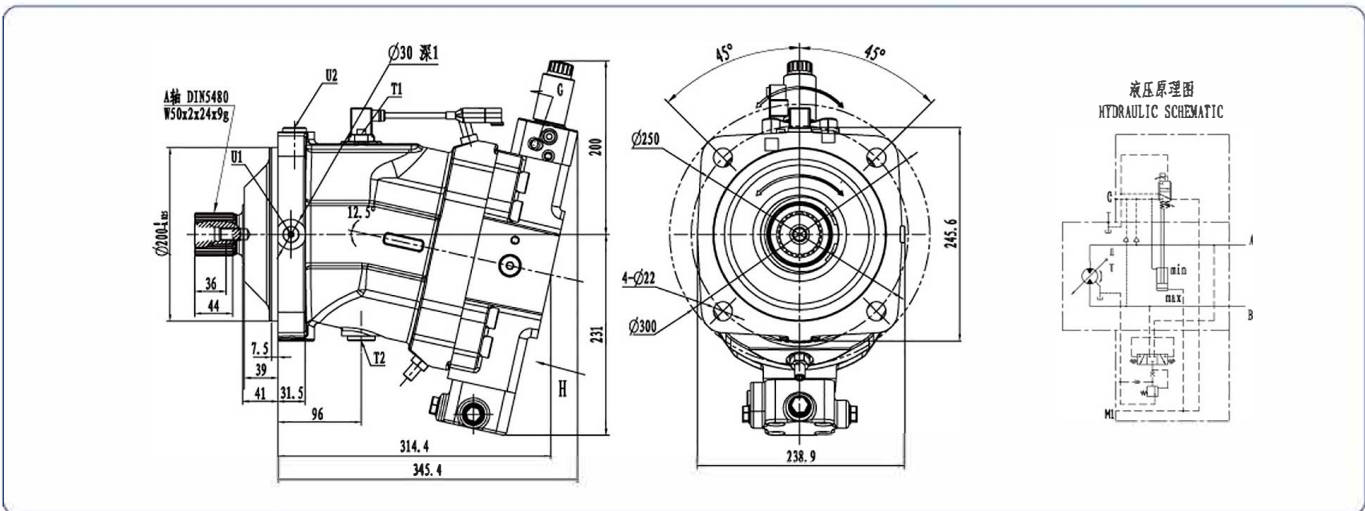


● IA6VM55EP2



排量 Displacement ml/r	额定压力 Rated Pressure MPa	瞬间峰值压力 Instantaneous Peak Pressure MPa	最大转速 Max. Speed r/min
55	40	45	3400

● IA6VM200EP2



排量 Displacement ml/r	额定压力 Rated Pressure MPa	瞬间峰值压力 Instantaneous Peak Pressure MPa	最大转速 Max. Speed r/min
200	40	45	4600



IA4VG Series Axial Piston Variable Displacement Pump

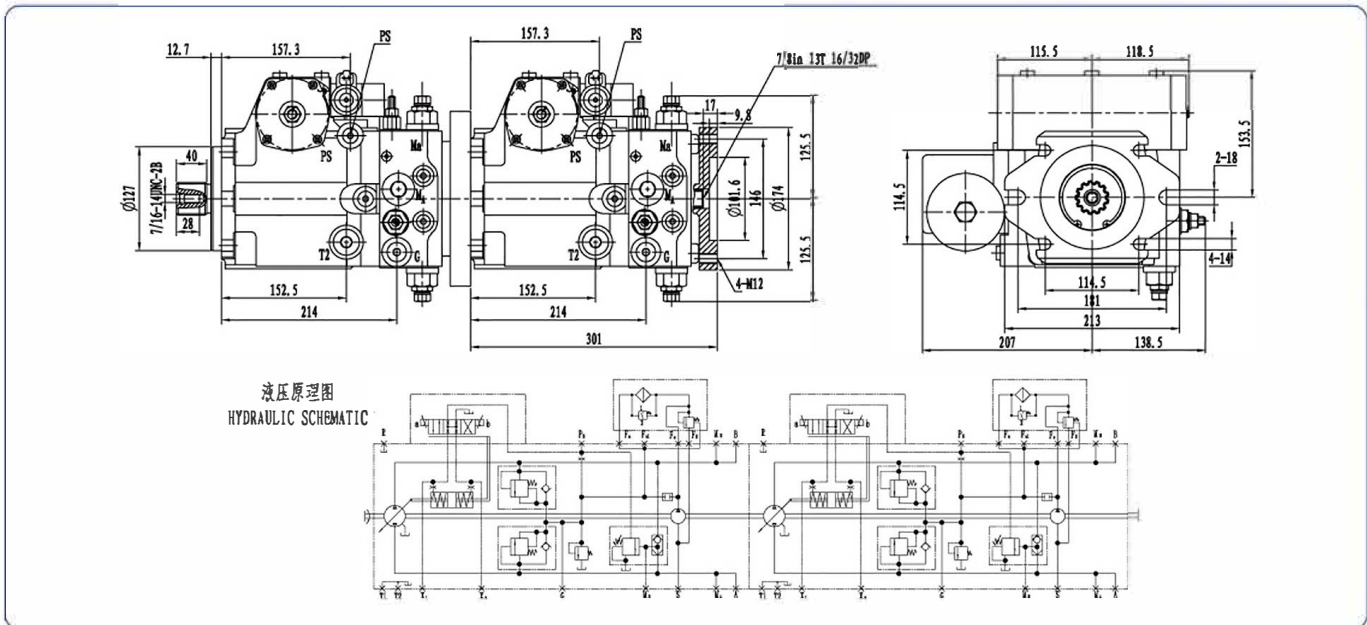
Standard Features

- The bent axial piston variable displacement pump is for hydrostatic transmission in the closed loop system
- Flow rate is in proportion to drive speed and displacement
- By adjusting the angle of the rotating bent plate can control to get the stepless oil flow rate.
- When bent plate pass through mid-position the flow direction of the hydraulic oil will change smoothly.
- The high pressure side is equipped with two pressure overflow valves to prevent overload of the static transmission of pump and motor.
- The built-in oil supplement pump acts as the slippage pump and the control pump. The maximum oil supplement pressure is limited by a built-in low pressure
- overflow valve.

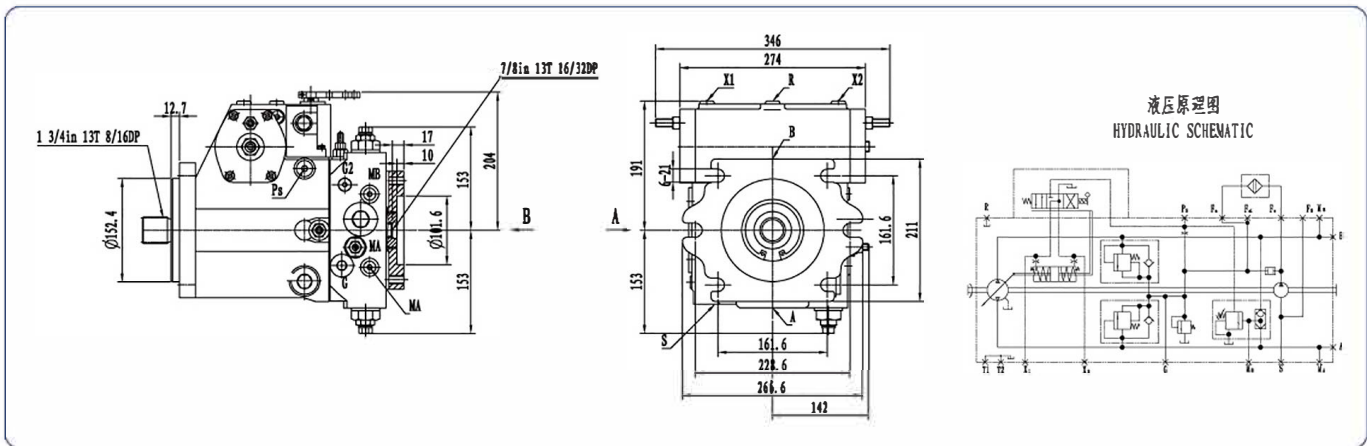
Please Read Carefully The Specifications Before Selection



● IA4VG71EP2-F07-00



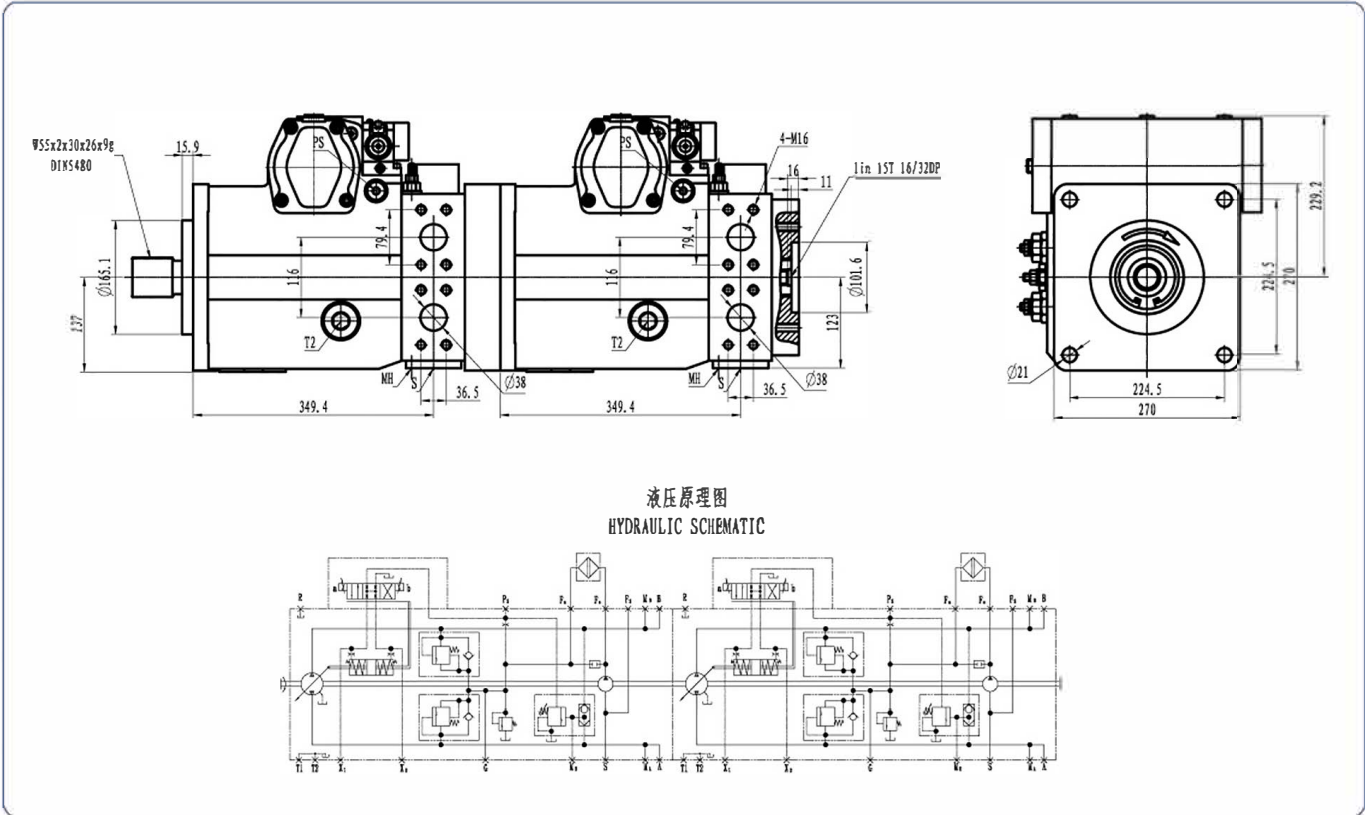
主泵额定排量 Rated Displacement of Main Pump cc/r	主泵额定压力 Rated Pressure of Main Pump bar	补油泵额定排量 Rate Displace of Charge Pump cc/r	补油泵设定压力 The Set Pressure of Charge Pump bar	最大转速 Max. Speed r/min
71+71	400	19.6	25	3000



主泵额定排量 Rated Displacement of Main Pump cc/r	主泵额定压力 Rated Pressure of Main Pump bar	补油泵额定排量 Rate Displace of Charge Pump cc/r	补油泵设定压力 The Set Pressure of Charge Pump bar	最大转速 Max. Speed r/min
125	400	28.3	25	2850



● IA4VG250-32-36-00



主泵额定排量 Rated Displacement of Main Pump cc/r	主泵额定压力 Rated Pressure of Main Pump bar	补油泵额定排量 Rate Displace of Charge Pump cc/r	补油泵设定压力 The Set Pressure of Charge Pump bar	最大转速 Max. Speed r/min
250+250	400	52.5	30	2400

THIS PAGE IS LEFT BLANK



● IGC Series Planetary Gearbox by Casing Rotating

1. Brief Introduction

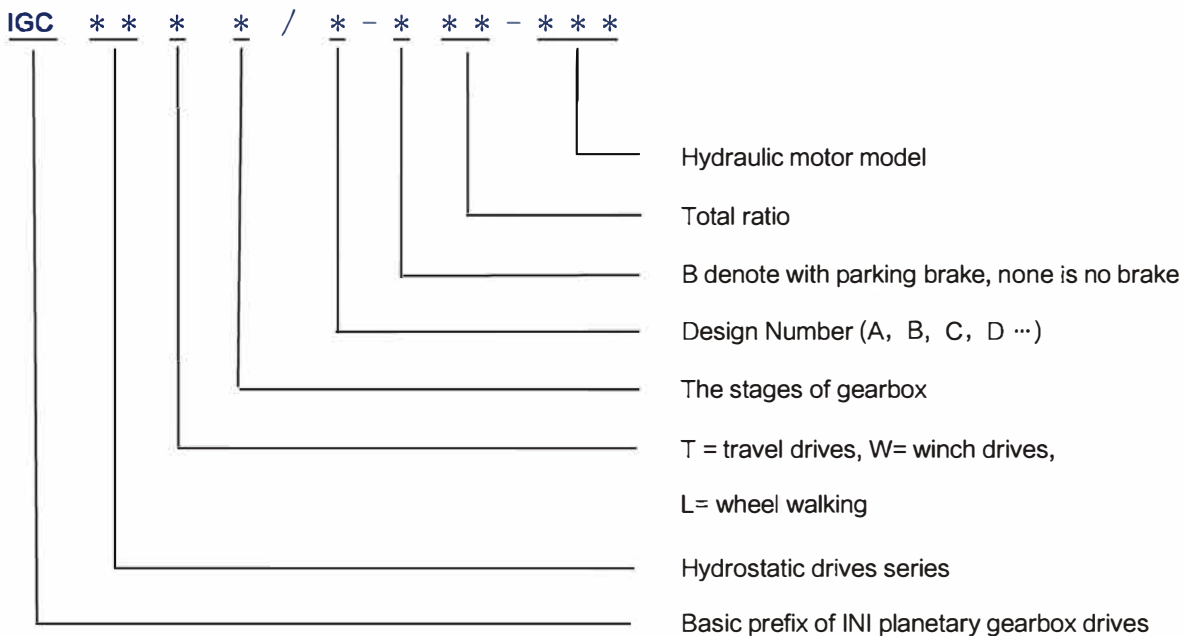
The IGC Series Planetary Gearbox by Casing Rotating consist of planetary gearbox and wet type multi-disc brake. Advanced design experience and modern fabrication processes warrant outstanding load carrying capacity and operational safety. The drives feature high total efficiency, compact and module design. The drives can be fitted with various hydraulic motors according to customer requirement. The IGC-T series is used for track walking and can be directly connected to wheels or tracks, it can also be used in driving devices such as tunneling machines and milling machines. The IGC-W series is used for winch mechanisms and can be directly installed inside the drum to save space. The IGC-L series is used for wheel walking and can achieve manual clutch and variable speed drive.

The drives described in this catalog are constantly reviewed standard type. Other design variants with different ratio, dimensions and power characteristics are available if so requested for specific applications.

The drives have been widely applied in crawler rotary drill rigs, trucks and tracked cranes, milling machine walking and power head drive, coal mining machine and power head drive, road rollers, railway vehicles, high-altitude operation truck wheel drive, self-propelled drilling machine track drive, and port and container crane driving mechanisms and winch mechanisms.

The drives not only widely have been used by domestic customer such as SANY, XCMG, ZOOMLION, but also have been exported to Southeast Asia, Middle East, India, South Korea, Netherlands, Germany and Russia and so on.

2. Model Options





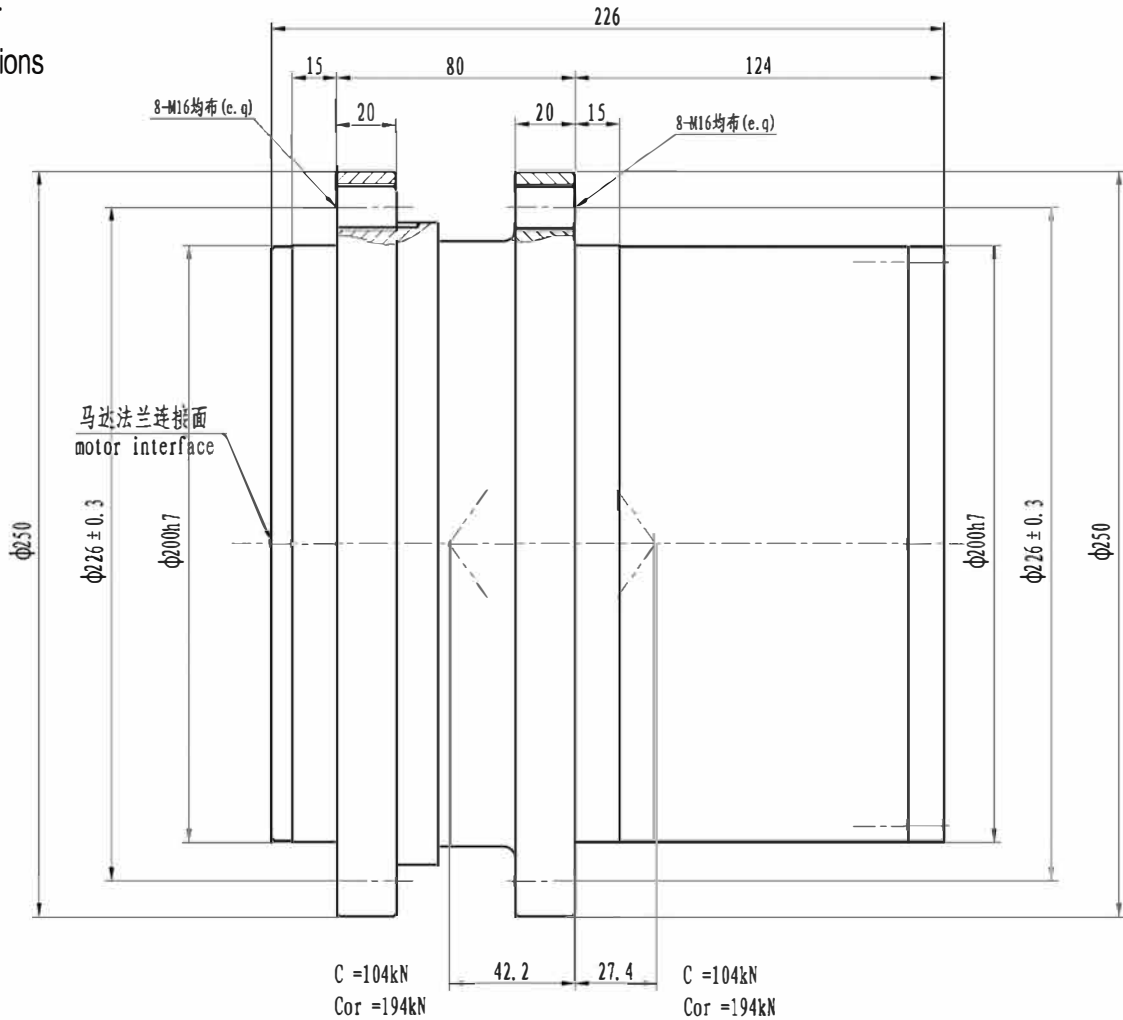
3. Options Example

IGC36T3-B79.4-A2FE80/6.1WVAL 10 represents that the series drive is 36 with maximum output torque of 36kNm, for travel drives, design number B, three stages planetary gearbox with a total ratio of 79.4 and a multi-disc parking brake, and could be fitted with axial piston hydraulic motor of A2FE80/6.1WVAL 10.



IGC8

外形尺寸 Dimensions



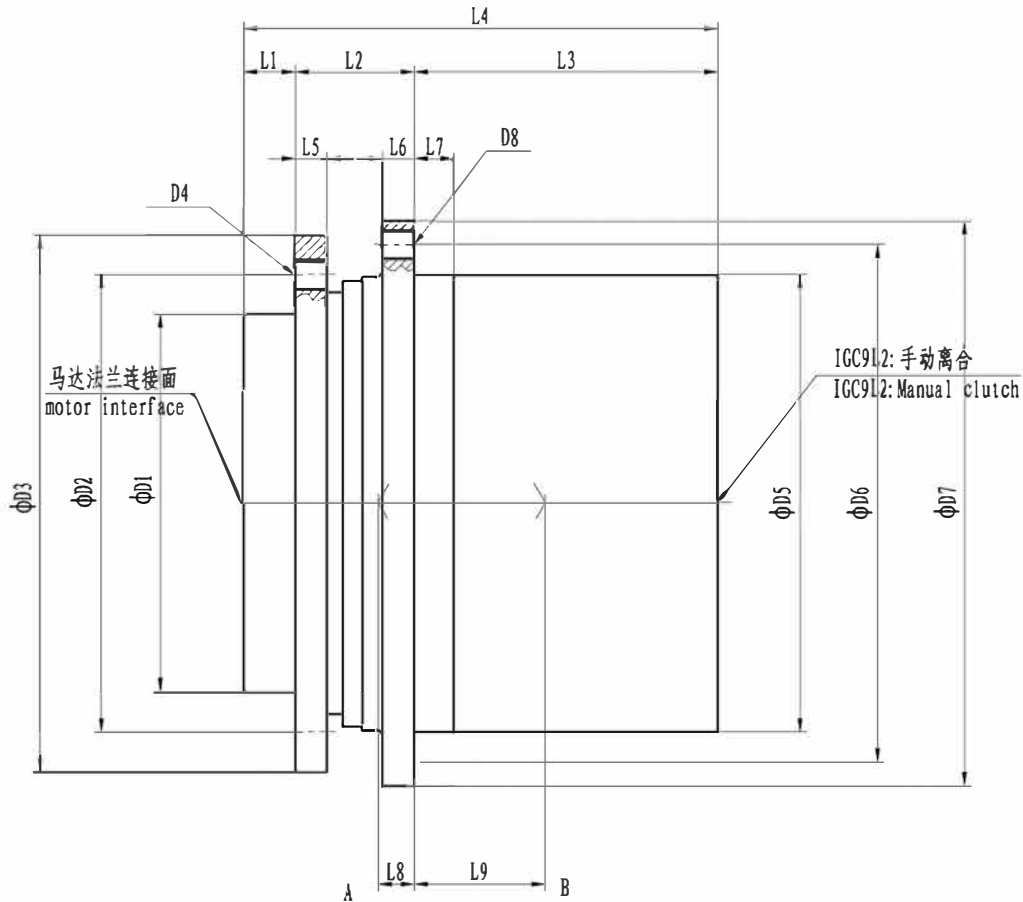
技术参数 Technical Data

系列代号 Serial code	最大输出扭矩 Output Torque T_{out} , Nm	传动比 Ratio i	液压马达 Hydraulic Motor	最高输入转速 Max. Input Speed r/min	最大制动力矩 Braking Torque $T_{br max}$, Nm	制动力工作压力 Brake Press. MPa	重量 Weight = kg
IGC8T2	8000	15.7 · 17.7 · 20.5 · 24.5 · 30.9	A2F32 A2F45 A2F56 A2F63	4000	390	1.5-5	42

- 减速机输入转向与输出转向相反, 除表中列传动比外, 对有批量的产品传动比可以另选。
- Gearbox input direction is contra to the output direction. Other ratio is optional.
- 该系列传动装置可根据用户需要选配不同形式的液压马达, 并可根据实际工况组合各种功能阀块。
- Allowing fitted with different type motors and manifolds for relevant actual application.
- 根据应用场合不同, 液压传动装置的使用选型也有所变化, 详情请咨询本公司相关技术人员。
- Differently sized units and additional design variants can be furnished if requested.

IGC9

外形尺寸 Dimensions



技术参数 Technical Data

系列代号 Serial code	最大输出扭矩 Output Torque T _{out} , Nm	传动比 Ratio i	液压马达 Hydraulic Motor		最高输入转速 Max. Input Speed r/min	最大制动扭矩 Braking Torque T _B , max. Nm	制动器工作压力 Brake Press. MPa	重量 Weight ≈ kg
IGC9T2	9000	20.4 · 25.6 · 29.6 · 35.6 · 45.1	A2F45	A10VE45 K45	4000	250	1.8-5	49
IGC9W2	6300		A2F55 A2F63					
IGC9L2	9200	32.6	PSM310.4.56 MBF10.4.56		3500	260	1.2-5	60

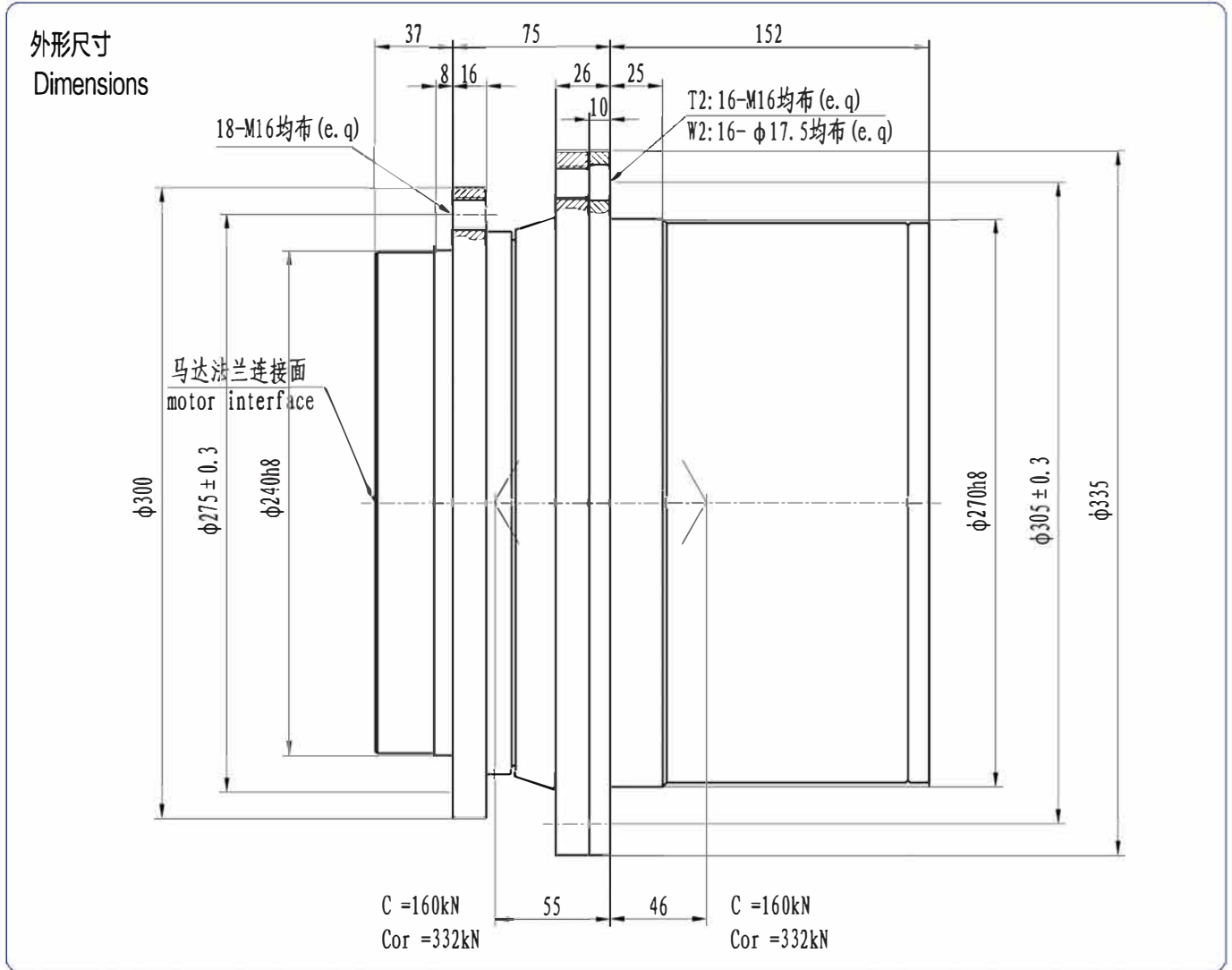
- 减速机输入转向与输出转向相反, 除表中所列传动比外, 对有批量的产品传动比可以另选。
- Gearbox input direction is contra to the output direction. Other ratio is optional.
- 该系列传动装置可根据用户需要选配不同形式的液压马达, 并可根据实际工况组合各种功能阀块。
- Allowing fitted with different type motors and manifolds for relevant actual application.
- 根据应用场合不同, 液压传动装置的使用选型也有所变化, 详情请咨询本公司相关技术人员。
- Differently sized units and additional design variants can be furnished if requested.

尺寸 Size

系列代号 Serial code	D1	D2	D3	D4	D5	D6	D7	D8	L1	L2	L3	L4	L5	L6	L7	L8	L9	A + B (kN)	
																		Cr	CDr
IGC9T2	190F7	230	270	12xM16	230h7	260	284	8xM16	26	60	153	249	16	16	20	18	66	138	280
IGC9W2								8xφ17										138	280
IGC9L2					220h8	275	310	8xM22x1.5	10	72	161.2	243.2	17						



IGC13



技术参数

Technical Data

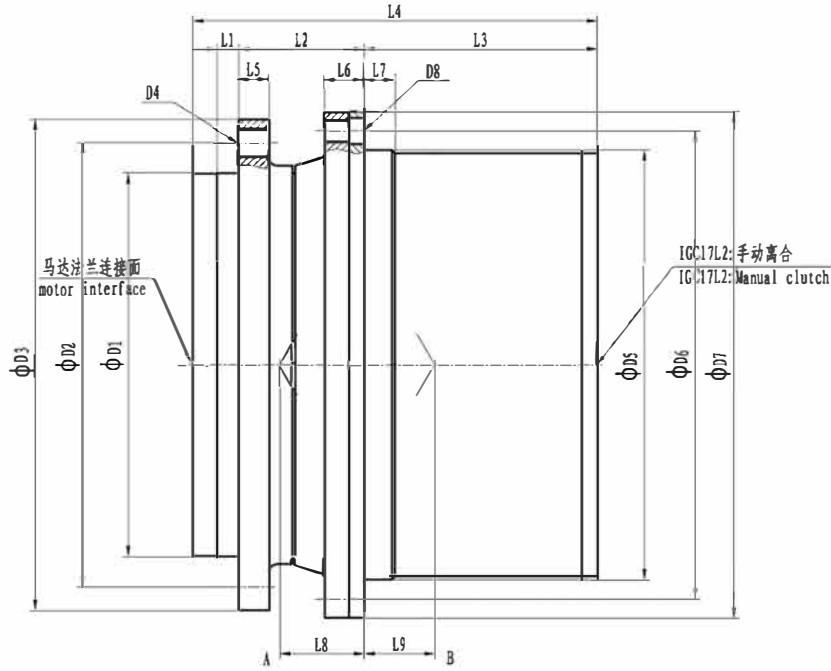
系列代号 Serial code	最大输出扭矩 Output Torque T _{out} , Nm	传动比 Ratio i	液压马达 Hydraulic Motor		最高输入转速 Max. Input Speed r/min	最大制动扭矩 Braking Torque T _{br. max.} , Nm	制动器工作压力 Brake Press. MPa	重量 Weight kg
IGC13T2	13000	24.7 · 26.4 · 32.1 · 37.6 · 45.4 · 54	A2FE45	A6VB55	4000	560	1.5-5	86
IGC13W2	9500		A2FE56	A10VE45				
			A2FE63	A10VE63				

- 减速机输入转向与输出转向相反,除表中所列传动比外,对有批量的产品传动比可以另选。
- Gearbox input direction is contra to the output direction. Other ratio is optional.
- 该系列传动装置可根据用户需要选配不同形式的液压马达,并可根据实际工况组合各种功能阀块。
- Allowing fitted with different type motors and manifolds for relevant actual application.
- 根据应用场合不同,液压传动装置的使用选型也有所变化,详情请咨询本公司相关技术人员。
- Differently sized units and additional design variants can be furnished if requested.



● IGC17

外形尺寸 Dimensions



技术参数 Technical Data

系列代号 Serial code	最大输出扭矩 Output Torque T _{max} , Nm	传动比 Ratio i	液压马达 Hydraulic Motor	最高输入转速 Max. Input Speed r/min	最大制动力矩 Braking Torque T _{Br. max.} , Nm	制动器工作压力 Brake Press. MPa	重量 Weight = kg
IGC17T2	17000	23.7 · 26.4 · 32.1 · 37.6 · 45.4 · 54	A2FB45 A6VE55 A2FE56 A10VE45 A2FE63 A10VE63	4000	560	1.5-5	90
IGC17W2	14000						
IGC17T3	17000	65.2 · 77.9 · 88.2 · 102.6					100
IGC17W3	14000						
IGC17L2	17000	34.8 · 43.8	PSM310.4.56 MBF10.4.56	3500	450	1.8-5	110

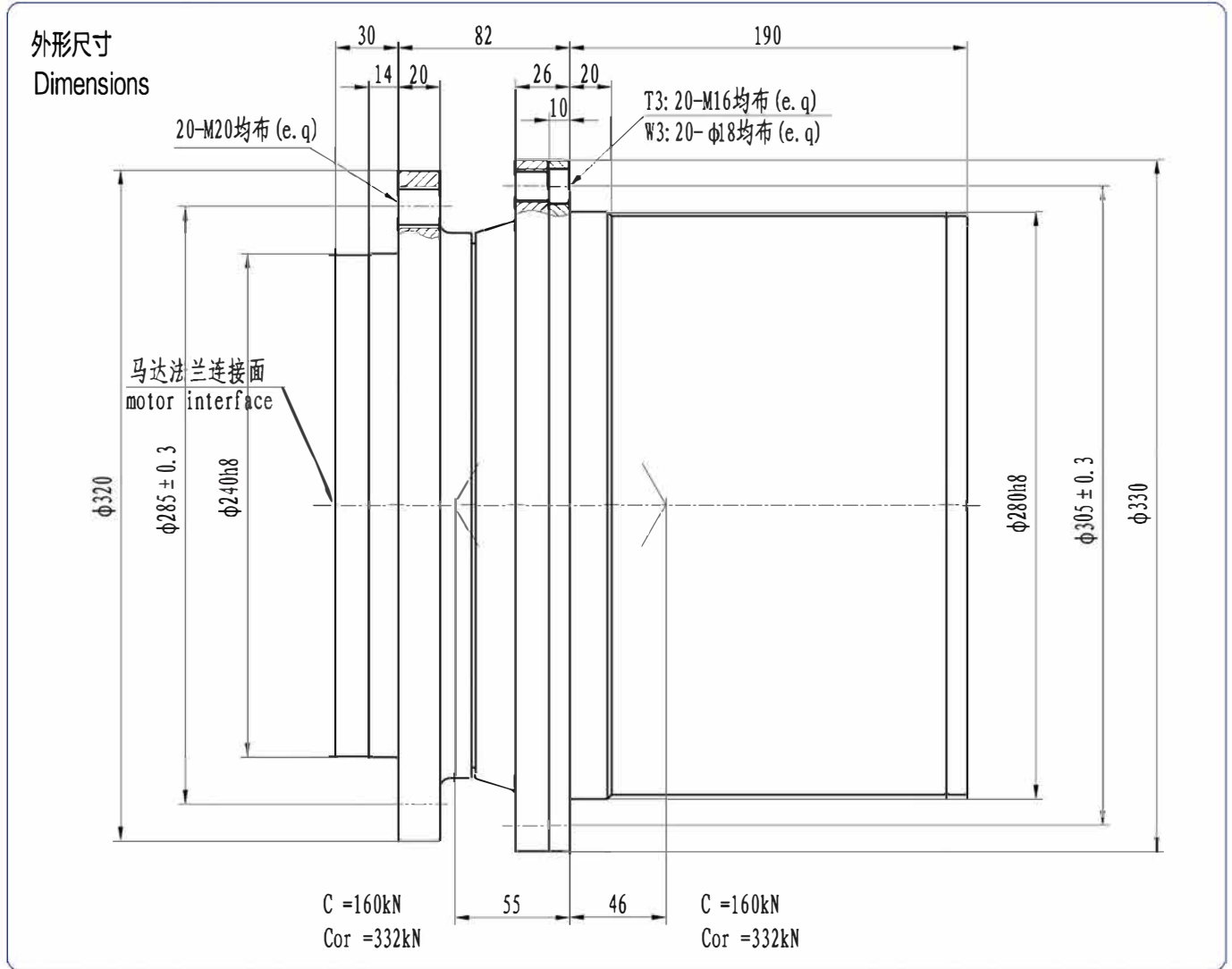
- 减速机输入转向与输出转向相反,除表中所列传动比外,对有批量的产品传动比可以另选。
- Gearbox input direction is contra to the output direction. Other ratio is optional.
- 该系列传动装置可根据用户需要选配不同形式的液压马达,并可根据实际工况组合各种功能阀块。
- Allowing fitted with different type motors and manifolds for relevant actual application.
- 根据应用场合不同,液压传动装置的使用选型也有所变化,详情请咨询本公司相关技术人员。
- Differently sized units and additional design variants can be furnished if requested.

尺寸 Size

系列代号 Serial code	D1	D2	D3	D4	D5	D6	D7	D8	L1	L2	L3	L4	L5	L6	L7	L8	L9	A + B (kN)			
																		Cr	CO _r		
IGC17T2	250h8	290	320	16xM20	280h8	305	330	16xM16	14	82	152	264	20	26	20	55	46	160	332		
IGC17W2								16x φ17.5													
IGC17T3								16xM16												174	286
IGC17W3								16x φ17.5													
IGC17L2	270h8	300	330	18xM16		335	370	10xM22	15	115	155	285	25	25		61	37	188	387		



● IGC24



技术参数

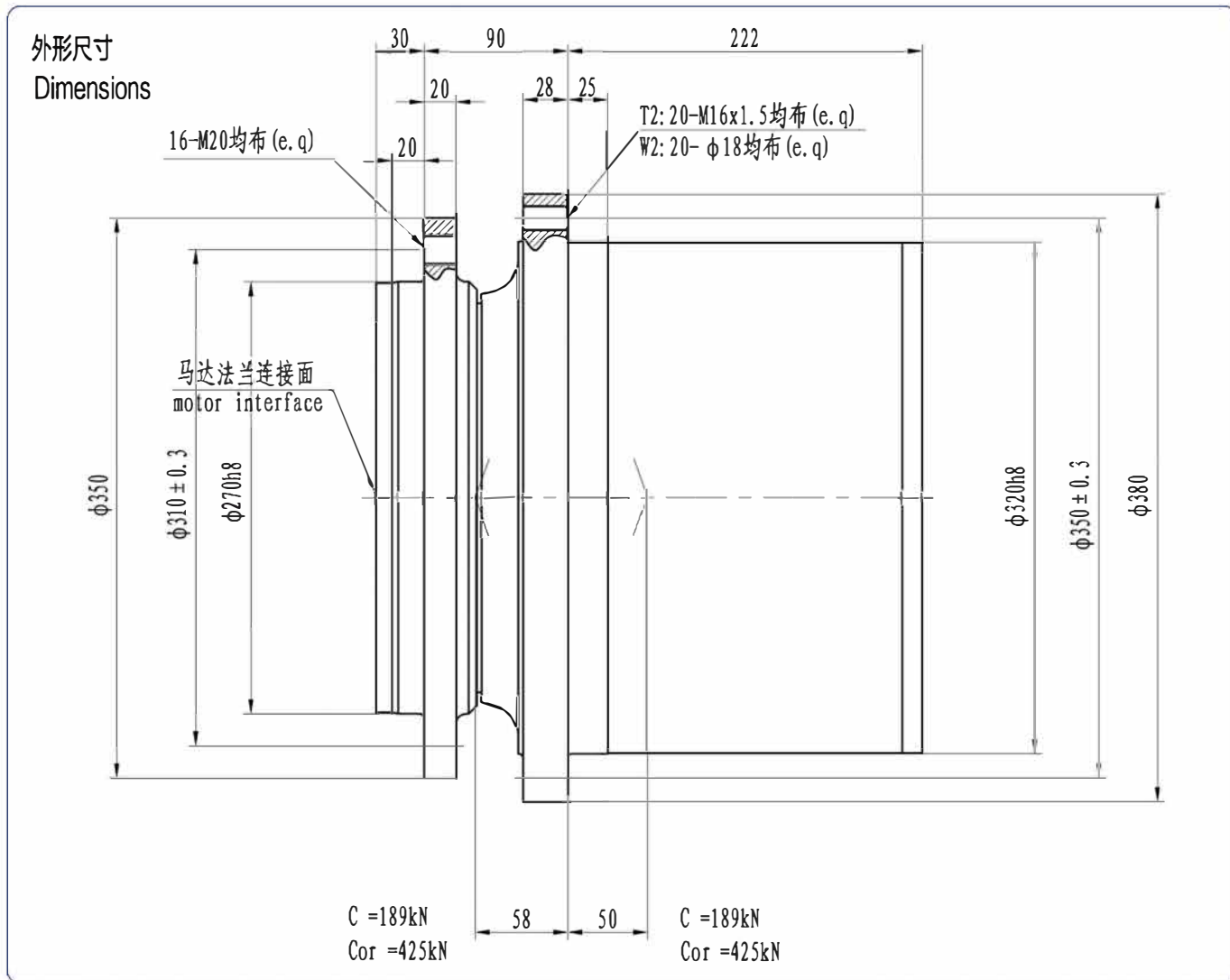
Technical Data

系列代号 Serial code	最大输出扭矩 Output Torque T _{max} Nm	传动比 Ratio i	液压马达 Hydraulic Motor		最高输入转速 Max. Input Speed r/min	最大制动力矩 Braking Torque T _{Br max} Nm	制动器工作压力 Brake Press. MPa	重量 Weight kg
IGC24T3	24000	72.6 · 90.1 · 102.6 · 120.5 · 137.2	A2FB45	A6VB55	4000	560	1.5-5	105
IGC24W3	19000		A2FB56	A10VB45				
			A2FB63	A10VB63				

- 减速机输入转向与输出转向相反,除表中所列传动比外,对有批量的产品传动比可以另选.
- Gearbox input direction is contra to the output direction. Other ratio is optional.
- 该系列传动装置可根据用户需要选配不同形式的液压马达,并可根据实际工况组合各种功能阀块.
- Allowing fitted with different type motors and manifolds for relevant actual application.
- 根据应用场合不同,液压传动装置的使用选型也有所变化,详情请咨询本公司相关技术人员.
- Differently sized units and additional design variants can be furnished if requested.



IGC26



技术参数

Technical Data

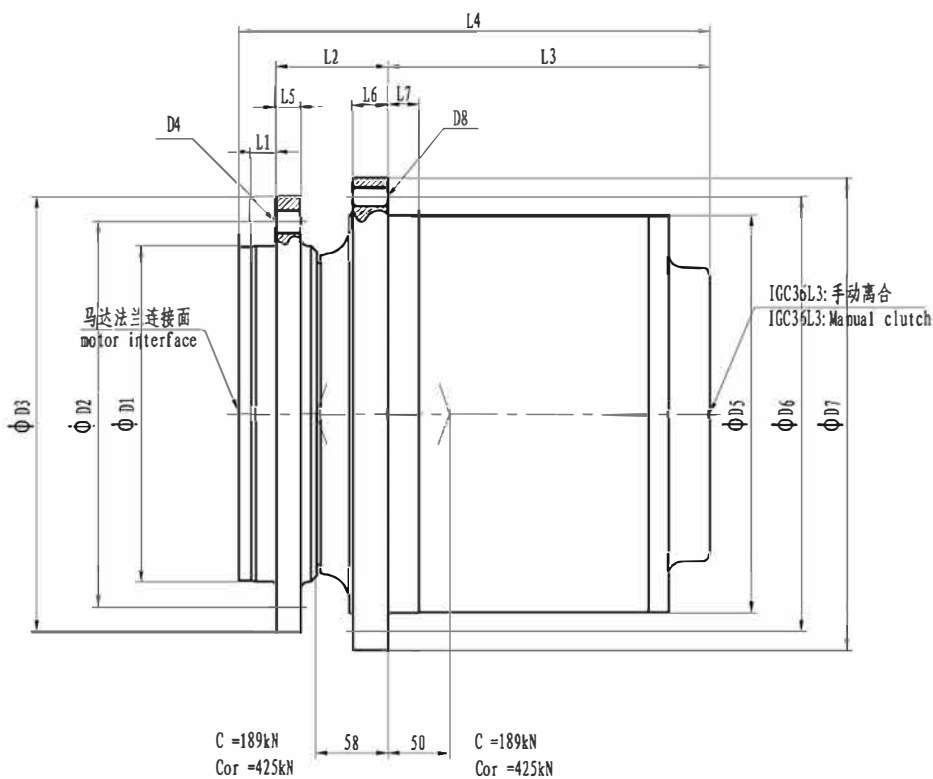
系列代号 Serial code	最大输出扭矩 Output Torque T _{out} , Nm	传动比 Ratio i	液压马达 Hydraulic Motor		最高输入转速 Max. Input Speed r/min	最大制动力矩 Braking Torque T _{Br max} , Nm	制动器工作压力 Brake Press. MPa	重量 Weight = kg
IGC26T2	26000	17.37 · 23 · 27.93 · 41.1 · 44 · 48.1	A2FE56	A6VE55 A6VE80	4000	790	1.5-5	150
IGC26W2	18000		A2FE63 A2FE80 A2FE90					

- 减速机输入转向与输出转向相反, 除表中所列传动比外, 对有批量的产品传动比可以另选。
- Gearbox input direction is contra to the output direction. Other ratio is optional.
- 该系列传动装置可根据用户需要选配不同形式的液压马达, 并可根据实际工况组合各种功能阀块。
- Allowing fitted with different type motors and manifolds for relevant actual application.
- 根据应用场合不同, 液压传动装置的使用选型也有所变化, 详情请咨询本公司相关技术人员。
- Differently sized units and additional design variants can be furnished if requested.



IGC36

外形尺寸 Dimensions



技术参数 Technical Data

系列代号 Serial code	最大输出扭矩 Output Torque T_{max} Nm	传动比 Ratio i	液压马达 Hydraulic Motor	最高输入转速 Max. Input Speed r/min	最大制动扭矩 Braking Torque $T_{br. max}$ Nm	制动器工作压力 Brake Press. MPa	重量 Weight kg
IGC36T3	36000	67 · 79.4 · 88 · 2 · 100 · 116.6 · 130.4 · 203	A2FE56	4000	790	1.5-5	170
IGC36W3	26000		A2FE63 A2FE80 A2FE90				
IGC36L3	36000	75.5	PSM310. 4. 56 MBF10. 4. 56	3500	450	1.8-5	155

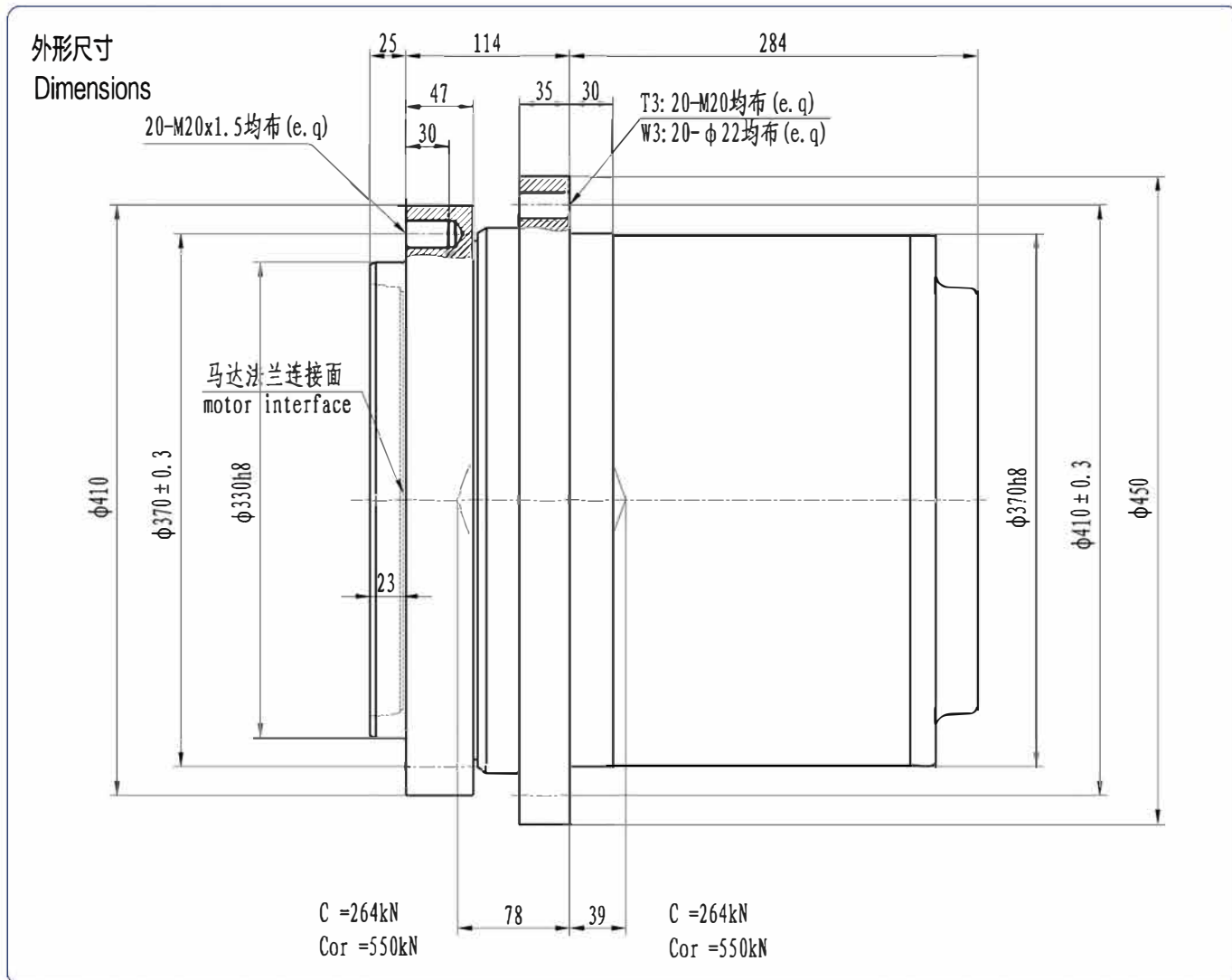
- 减速机输入转向与输出转向相反, 除表中所列传动比外, 对有批量的产品传动比可以另选。
- Gearbox input direction is contra to the output direction. Other ratio is optional.
- 该系列传动装置可根据用户需要选配不同形式的液压马达, 并可根据实际工况组合各种功能阀块。
- Allowing fitted with different type motors and manifolds for relevant actual application.
- 根据应用场合不同, 液压传动装置的使用选型也有所变化, 详情请咨询本公司相关技术人员。
- Differently sized units and additional design variants can be furnished if requested.

尺寸 Size

系列代号 Serial code	D1	D2	D3	D4	D5	D6	D7	D8	L1	L2	L3	L4	L5	L6	L7	L8	L9	A + B (kN)	
																		Cr	COr
IGC36T3	270h8	310	350	16xM20	320h7	350	380	20xM16x1.5	20	90	259	379	20	28	25	58	50	189	425
IGC36W3								20x phi16											
IGC36L3	240h8	285	330	20xM20	320h8	380	405	20xM16	20	82	258	360	37	28	20	46	59	235	430



● IGC60



技术参数

Technical Data

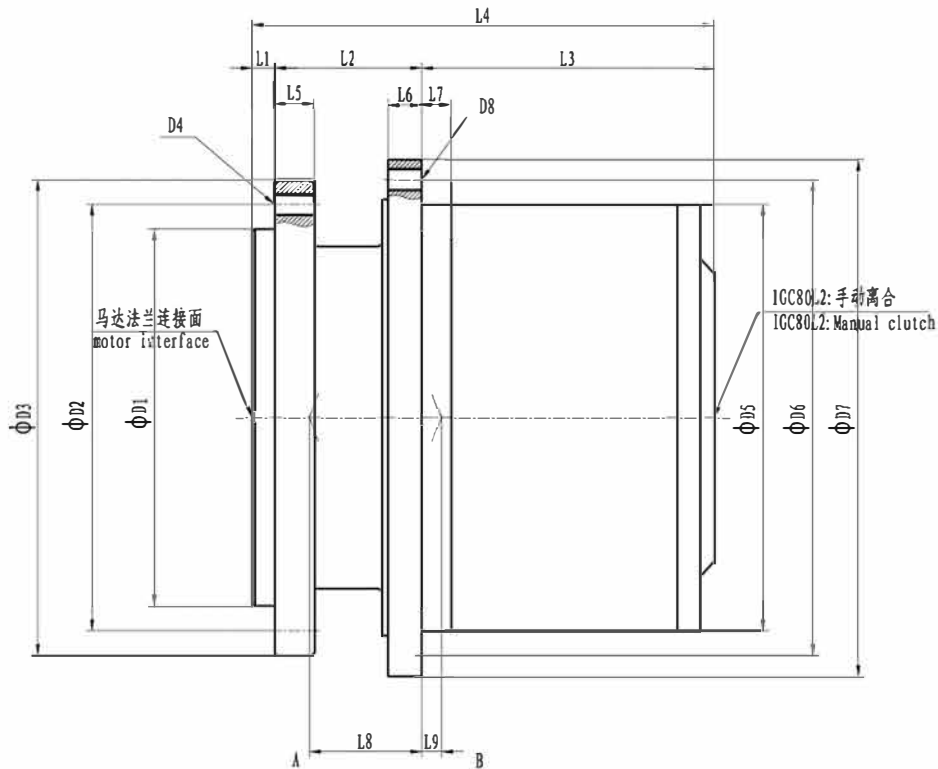
系列代号 Serial code	最大输出扭矩 Output Torque T _{max} Nm	传动比 Ratio i	液压马达 Hydraulic Motor		最高输入转速 Max. Input Speed r/min	最大制动力矩 Braking Torque T _{Br max} Nm	制动器工作压力 Brake Press. MPa	重量 Weight kg
IGC60T3	60000	79.8 · 86.5 · 94.8 · 105.5 · 119.8 · 139.9 · 169.9	A2FB80	A6VE80	4000	780	1.3-5	242
IGC60W3	42500		A2FE90	A6VE107				
			A2FE107					
			A2FE125					

- 减速机输入转向与输出转向相反,除表中所列传动比外,对有批量的产品传动比可以另选。
- Gearbox input direction is contra to the output direction. Other ratio is optional.
- 该系列传动装置可根据用户需要选配不同形式的液压马达,并可根据实际工况组合各种功能模块。
- Allowing fitted with different type motors and manifolds for relevant actual application.
- 根据应用场合不同,液压传动装置的使用选型也有所变化,详情请咨询本公司相关技术人员。
- Differently sized units and additional design variants can be furnished if requested.



● IGC80

外形尺寸 Dimensions



技术参数 Technical Data

系列代号 Serial code	最大输出扭矩 Output Torque T _{max} Nm	传动比 Ratio i	液压马达 Hydraulic Motor	最高输入转速 Max. Input Speed r/min	最大制动力矩 Braking Torque T _{br. max.} Nm	制动器工作压力 Brake Press. MPa	重量 Weight ≈ kg
IGC80T3	80000	76.7 · 99 · 110.9 · 126.9 · 149.9 · 185.4	A2FE107	4000	910	1.3-5	355
IGC80W3	67000		A2FE125 A6VE107 A2FE160 A6VE160 A2FE180				
IGC80L2	74288	55.33	A6VE170 A6VM170 A6VE215 A6VM200	3500	1150	1.5-5	330

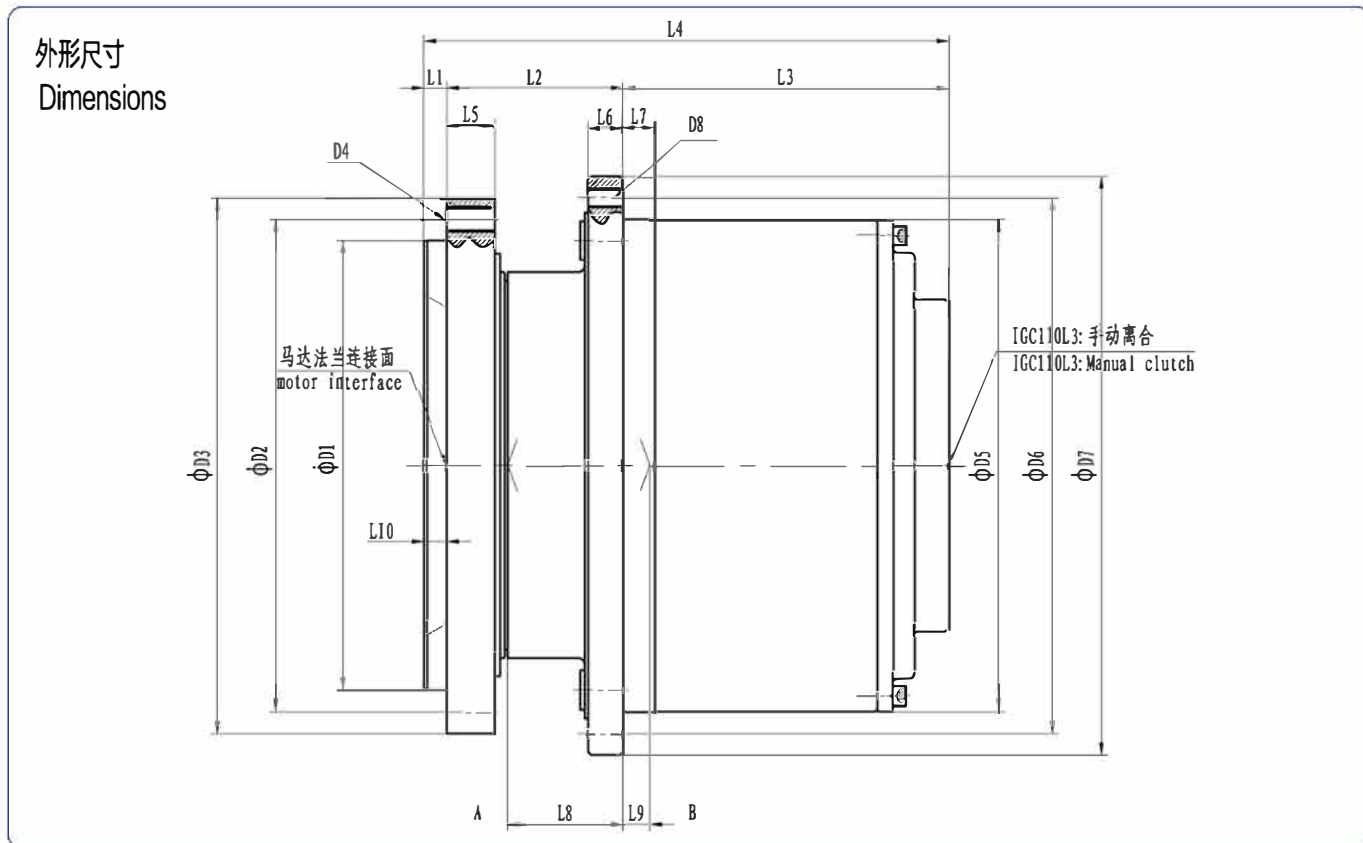
- 减速机输入转向与输出转向相反,除表中所列传动比外,对有批量的产品传动比可以另选。
- Gearbox input direction is contra to the output direction. Other ratio is optional.
- 该系列传动装置可根据用户需要选配不同形式的液压马达,并可根据实际工况组合各种功能阀块。
- Allowing fitted with different type motors and manifolds for relevant actual application.
- 根据应用场合不同,液压传动装置的使用选型也有所变化,详情请咨询本公司相关技术人员。
- Differently sized units and additional design variants can be furnished if requested.

尺寸 Size

系列代号 Serial code	D1	D2	D3	D4	D5	D6	D7	D8	L1	L2	L3	L4	L5	L6	L7	L8	L9	A + B (kN)	
																		Cr	CO _r
IGC80T3	380h8	430	480	20xM24	430h8	480	520	20xM24	23	148	295	466	40	34	25	113	20	A 509	A 1080
IGC80W3								20x φ16										B 470	B 980
IGC80L2								24xM24	14.5	229.5	427	30	30	30	78.2	39.3	521	1122	



● IGC110



技术参数 Technical Data

系列代号 Serial code	最大输出扭矩 Output Torque T _{max} Nm	传动比 Ratio i	液压马达 Hydraulic Motor	最高输入转速 Max. Input Speed r/min	最大制动力矩 Braking Torque T _{Br max} Nm	制动器工作压力 Brake Press. MPa	重量 Weight ≈ kg
IGC110T3	110000	95.8 · 114.8 · 128.6 · 147.2 · 173.9 · 215	A2FE107	4000	910	1.3-5	395
IGC110W3	100000		A6VE107 A2FE125 A2FE160 A2FE180 A6VE160				
IGC110L3	110000	61 · 65.4	A6VE170 A6VE215	4000	1400	1.8-5	430

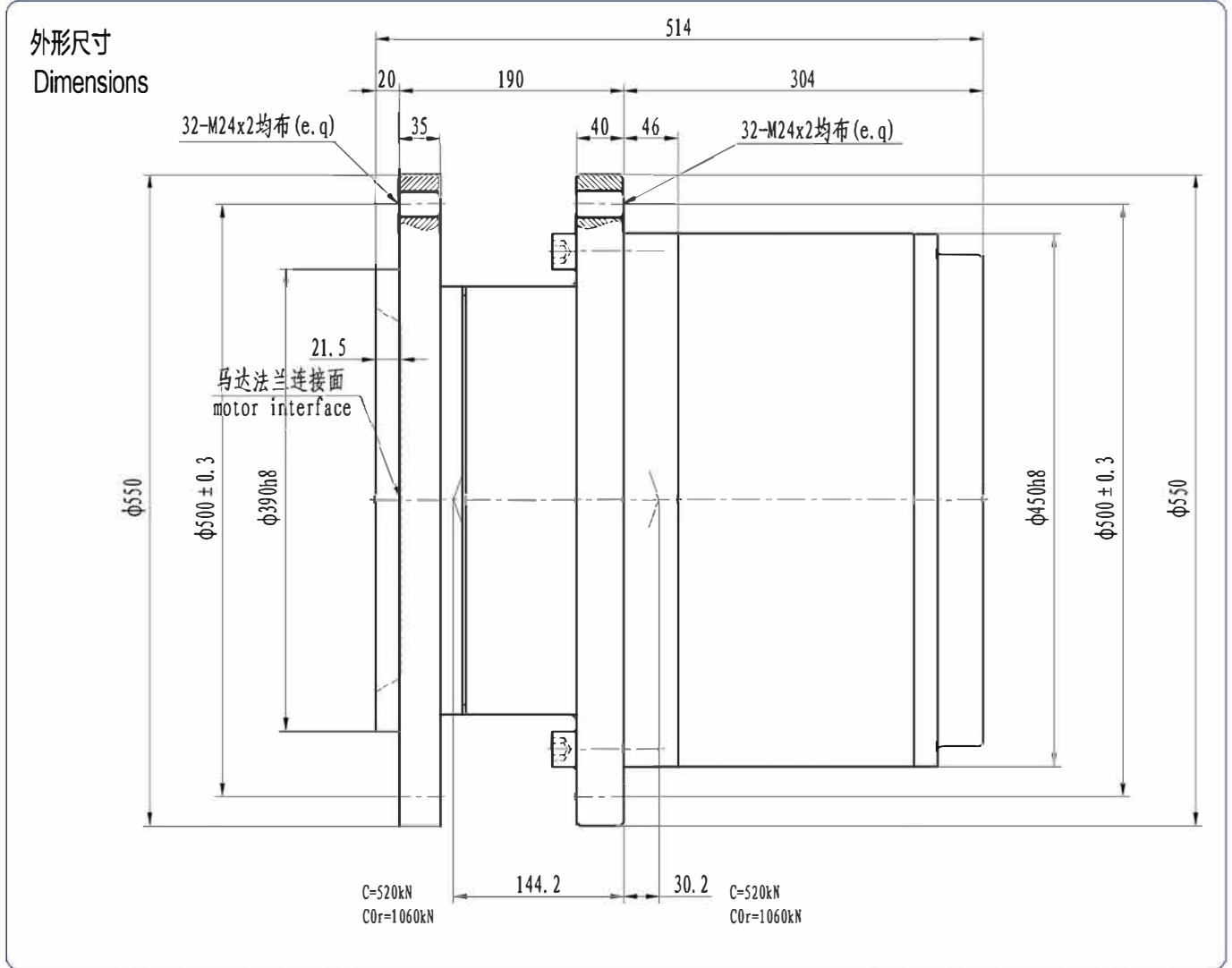
- 减速机输入转向与输出转向相反,除表中所列传动比外,对有批量的产品传动比可以另选。
- Gearbox input direction is contra to the output direction. Other ratio is optional.
- 该系列传动装置可根据用户需要选配不同形式的液压马达,并可根据实际工况组合各种功能阀块。
- Allowing fitted with different type motors and manifolds for relevant actual application.
- 根据应用场合不同,液压传动装置的使用选型也有所变化,详情请咨询本公司相关技术人员。
- Differently sized units and additional design variants can be furnished if requested.

尺寸 Size

系列代号 Serial code	D1	D2	D3	D4	D5	D6	D7	D8	L1	L2	L3	L4	L5	L6	L7	L8	L9	L10	A + B (kN)	
																			Cr	CO _r
IGC110T3	420h8	460	500	24xM24	460h8	500	540	36xM18x1.5	21.5	165	305	491.5	45	33	30	108	25	21.5	A 509	A 1080
IGC110W3								36x φ20											B 470	B 980
IGC110L3								24xM24											22.5	130



● IGC130



技术参数

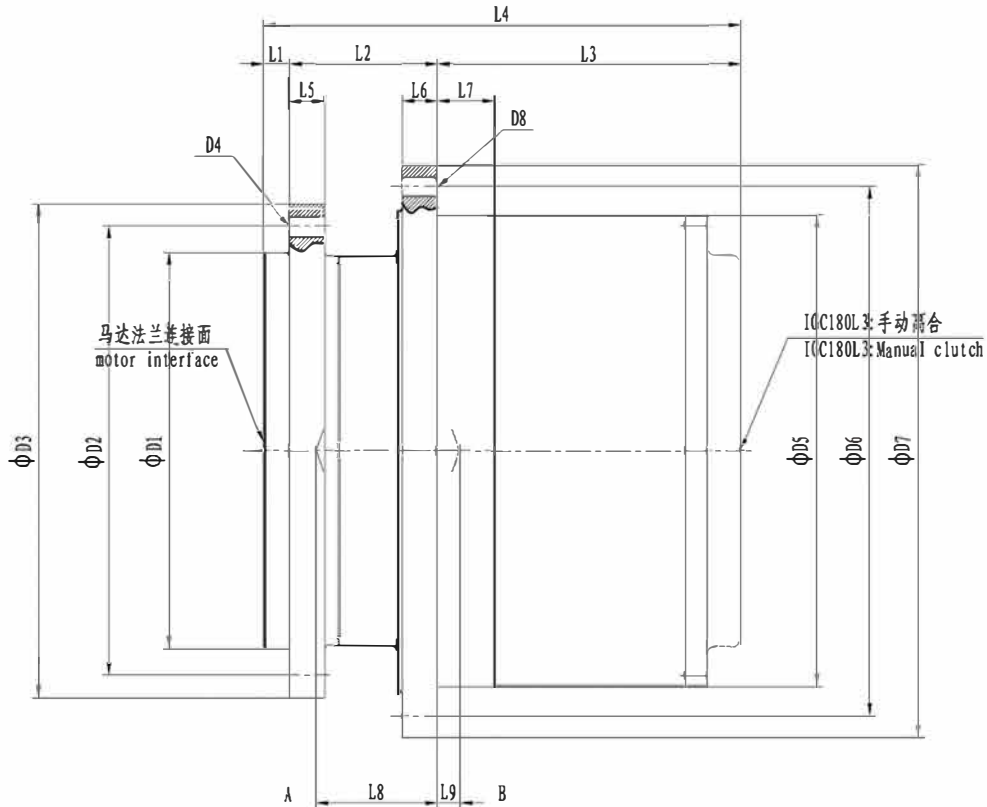
Technical Data

系列代号 Serial code	最大输出扭矩 Output Torque T _{max} Nm	传动比 Ratio i	液压马达 Hydraulic Motor		最高输入转速 Max. Input Speed r/min	最大制动力矩 Braking Torque T _{Br max} Nm	制动器工作压力 Brake Press. MPa	重量 Weight = kg
IGC130T3	130000	95.8 · 114.8 · 128.6 · 147.2 · 173.9 · 215	A2FE107 A2FE125 A2FE160 A2FE180	A6VE107 A6VE160	4000	910	1.3-5	430

- 减速机输入转向与输出转向相反,除表中所列传动比外,对有批量的产品传动比可以另选。
- Gearbox input direction is contra to the output direction. Other ratio is optional.
- 该系列传动装置可根据用户需要选配不同形式的液压马达,并可根据实际工况组合各种功能阀块。
- Allowing fitted with different type motors and manifolds for relevant actual application.
- 根据应用场合不同,液压传动装置的使用选型也有所变化,详情请咨询本公司相关技术人员。
- Differently sized units and additional design variants can be furnished if requested.

● IGC180

外形尺寸 Dimensions



技术参数 Technical Data

系列代号 Serial code	最大输出扭矩 Output Torque T _{max} Nm	传动比 Ratio i	液压马达 Hydraulic Motor	最高输入转速 Max. Input Speed r/min	最大制动力矩 Braking Torque T _{Br, max} Nm	制动器工作压力 Brake Press. MPa	重量 Weight =kg
IGC180T3	180000	182 - 227 - 251	A2FE107 A2FE125 A2FE160 A2FE180	4000	1020	1.8-5	685
IGC180W3	150000		A6VE107 A6VE160				
IGC180L3	180000	75	A6VM250 HMV280	4000	1500	1.8-5	670

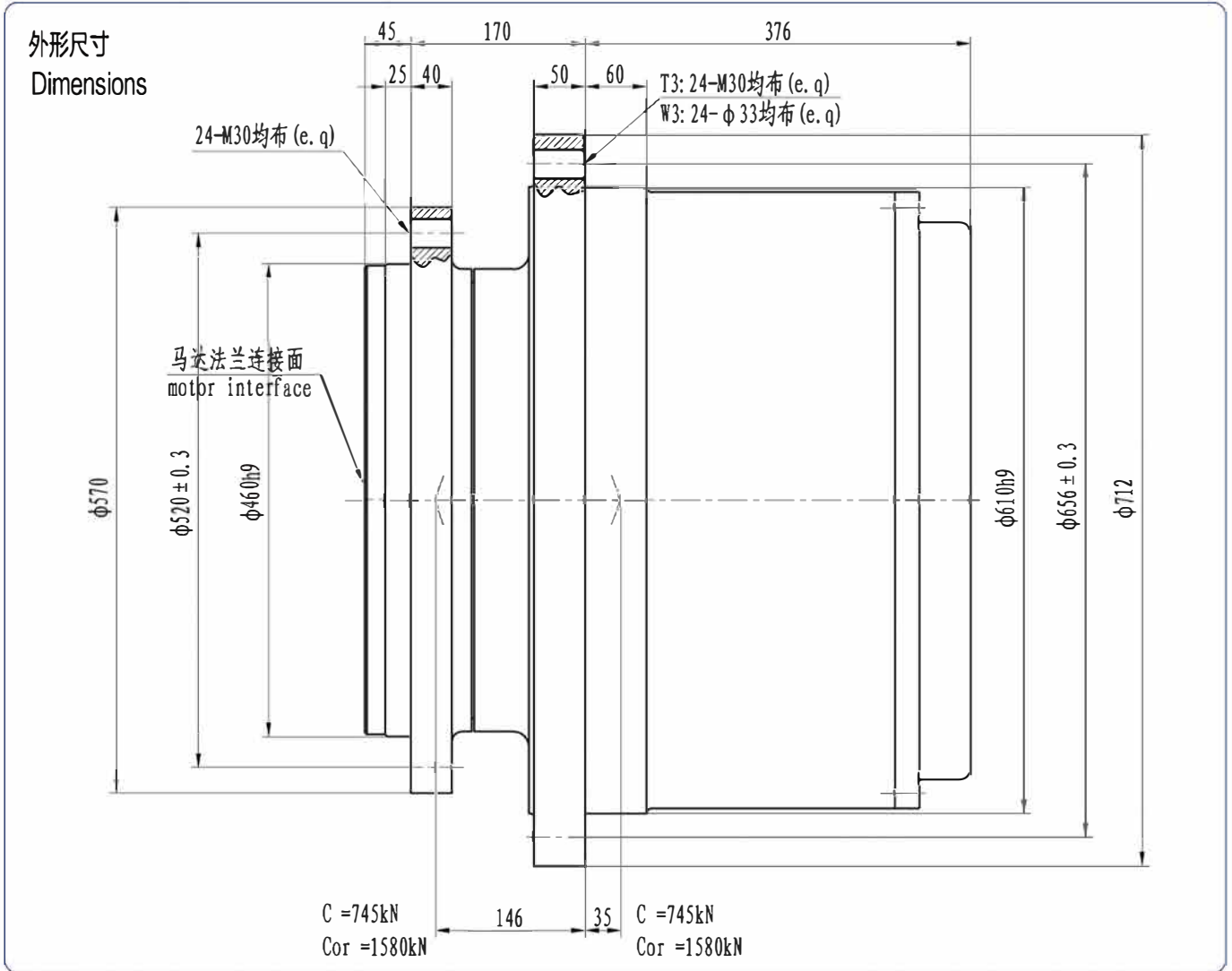
- 减速机输入转向与输出转向相反,除表中所列传动比外,对有批量的产品传动比可以另选。
- Gearbox input direction is contra to the output direction. Other ratio is optional.
- 该系列传动装置可根据用户需要选配不同形式的液压马达,并可根据实际工况组合各种功能阀块。
- Allowing fitted with different type motors and manifolds for relevant actual application.
- 根据应用场合不同,液压传动装置的使用选型也有所变化,详情请咨询本公司相关技术人员。
- Differently sized units and additional design variants can be furnished if requested.

尺寸 Size

系列代号 Serial code	D1	D2	D3	D4	D5	D6	D7	D8	L1	L2	L3	L4	L5	L6	L7	L8	L9	A + B (kN)	
																		Cr	COr
IGC180T3	450h8	510	560	30xM24x2	535h8	600	650	30xM24x2	30	168	345	543	40	40	65	138	26	745	1580
IGC180W3								30x φ26											
IGC180L3								30xM27x2											



IGC220



技术参数

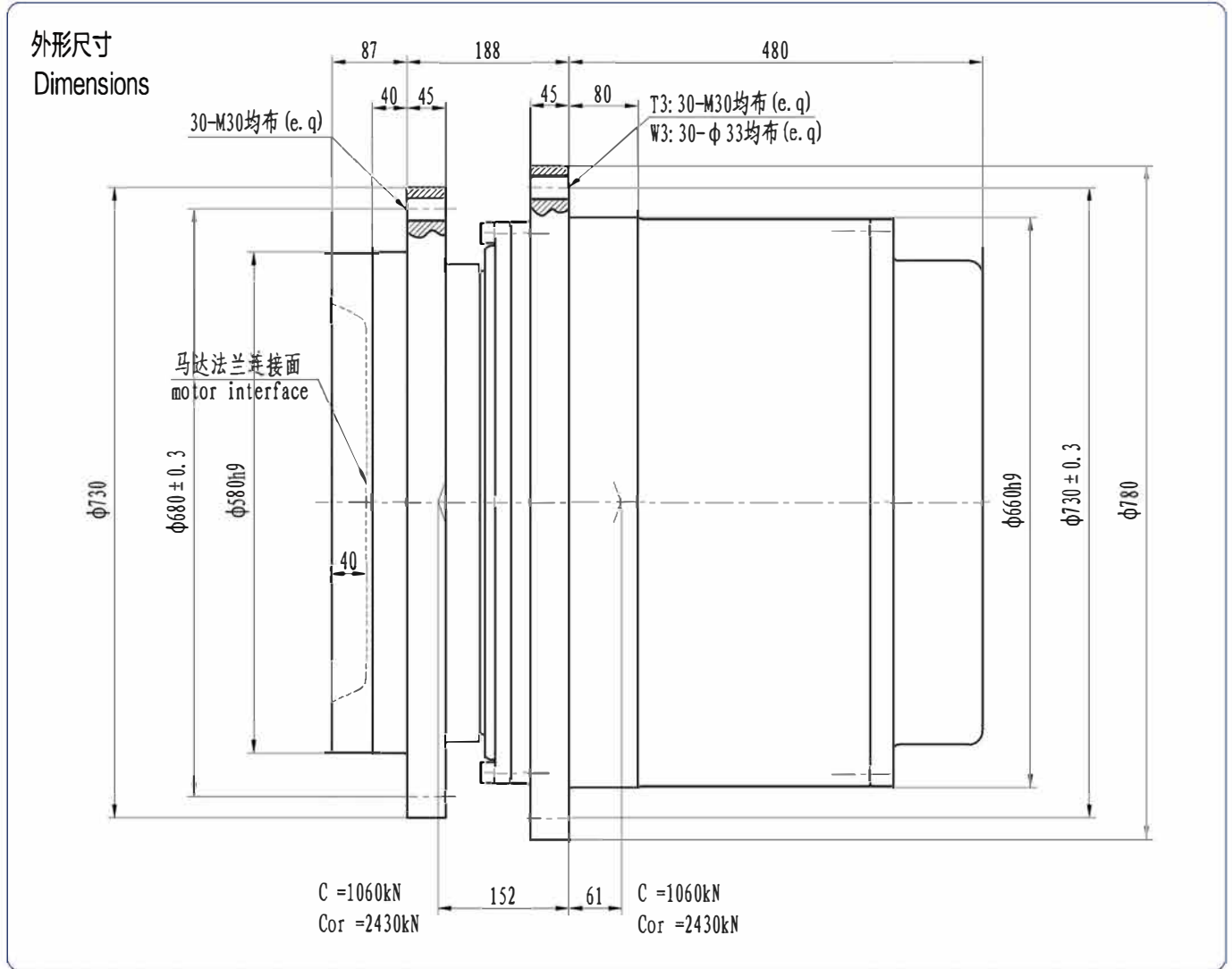
Technical Data

系列代号 Serial code	最大输出扭矩 Output Torque T _{max} Nm	传动比 Ratio i	液压马达 Hydraulic Motor		最高输入转速 Max. Input Speed r/min	最大制动扭矩 Braking Torque T _{Br max} Nm	制动器工作压力 Brake Press. MPa	重量 Weight kg
IGC220T3	220000	97.7 · 124 · 145.4 · 167 · 215 · 246.1 · 287 · 293	A2FE107	A6VE107	4000	1400	1.8-5	850
IGC220W3	200000		A2FE125	A6VE160				
			A2FE160	A6VM200				
			A2FE180	A6VM355				

- 减速机输入转向与输出转向相反,除表中所列传动比外,对有批量的产品传动比可以另选。
- Gearbox input direction is contra to the output direction. Other ratio is optional.
- 该系列传动装置可根据用户需要选配不同形式的液压马达,并可根据实际工况组合各种功能阀块。
- Allowing fitted with different type motors and manifolds for relevant actual application.
- 根据应用场合不同,液压传动装置的使用选型也有所变化,详情请咨询本公司相关技术人员。
- Differently sized units and additional design variants can be furnished if requested.



IGC330



技术参数

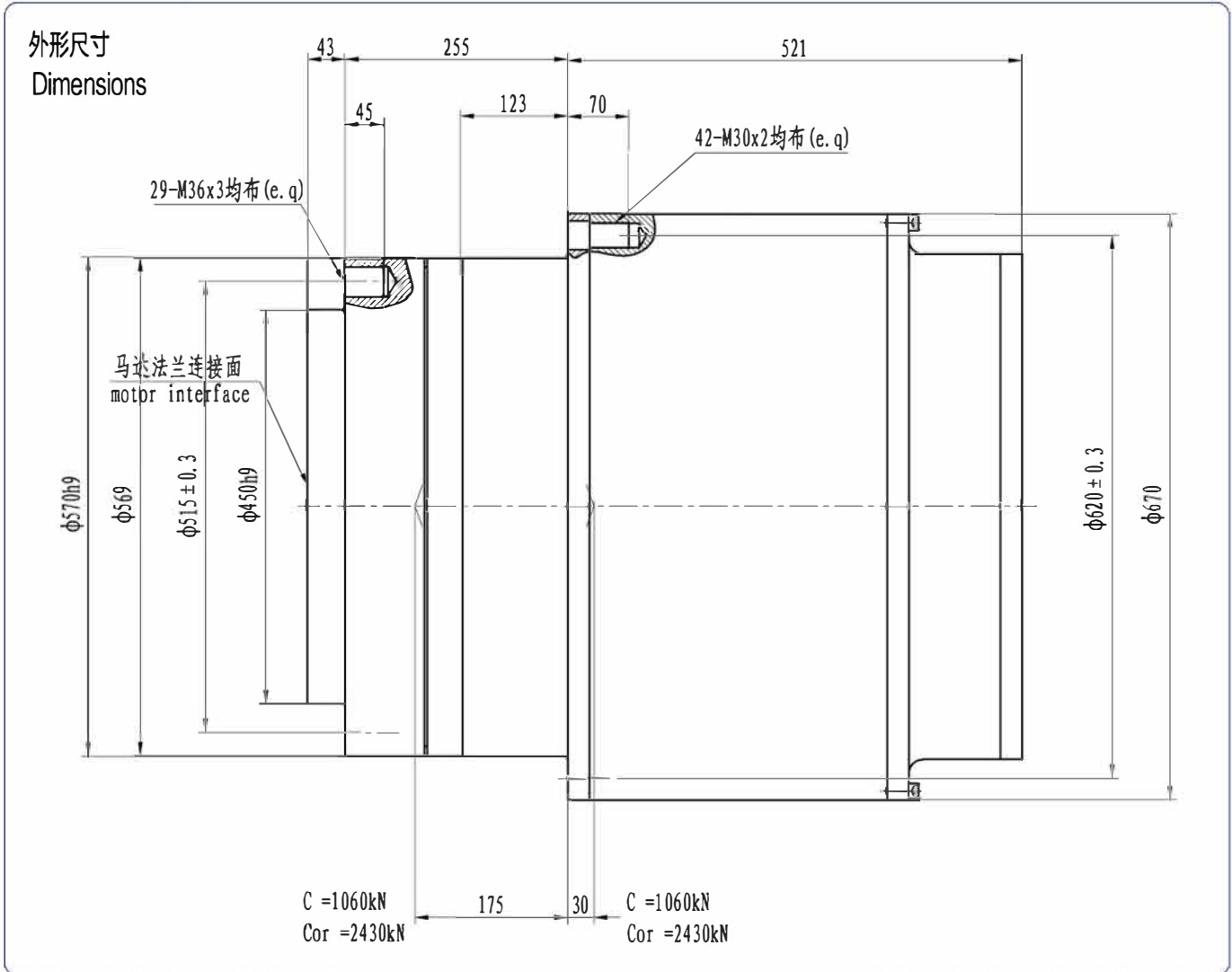
Technical Data

系列代号 Serial code	最大输出扭矩 Output Torque T_{max} , Nm	传动比 Ratio i	液压马达 Hydraulic Motor		最高输入转速 Max. Input Speed r/min	最大制动扭矩 Braking Torque $T_{\text{br max}}$, Nm	制动器工作压力 Brake Press. MPa	重量 Weight = kg
IGC330T3	330000	168.9 - 209.9 - 252 - 302.4	A2FE160	A6VB160	4000	2500	1.8-5	1285
IGC330W3	275000		A2FE180	A6VE250				
			A2FE250	A6VM200				
			A2FE355	A6VM355				

- 减速机输入转向与输出转向相反, 除表中所列传动比外, 对有批量的产品传动比可以另选。
- Gearbox input direction is contra to the output direction. Other ratio is optional.
- 该系列传动装置可根据用户需要选配不同形式的液压马达, 并可根据实际工况组合各种功能阀块。
- Allowing fitted with different type motors and manifolds for relevant actual application.
- 根据应用场合不同, 液压传动装置的使用选型也有所变化, 详情请咨询本公司相关技术人员。
- Differently sized units and additional design variants can be furnished if requested.



IGC450



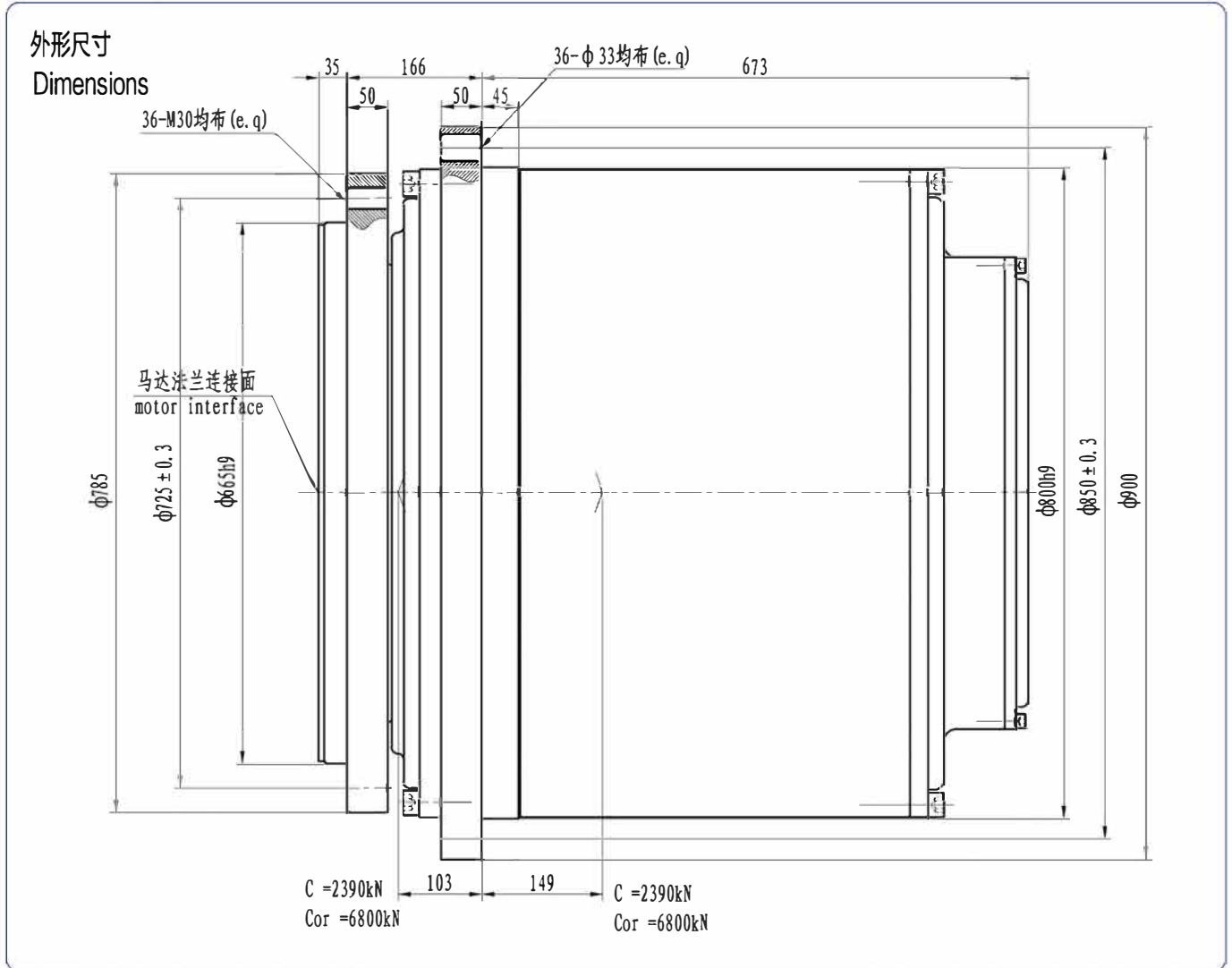
技术参数

Technical Data

系列代号 Serial code	最大输出扭矩 Output Torque T _{max} Nm	传动比 Ratio i	液压马达 Hydraulic Motor		最高输入转速 Max. Input Speed r/min	最大制动扭矩 Braking Torque T _{Br max} Nm	制动器工作压力 Brake Press. MPa	重量 Weight = kg
IGC450T4	450000	320.3 · 347.1 · 421.7	A2FE180 A2FE250 A2FE355 A2FM500	A6VB160 A6VE250 A6VM200 A6VM355	4000	1450	1.8-5	1305

- 减速机输入转向与输出转向相反,除表中所列传动比外,对有批量的产品传动比可以另选。
- Gearbox input direction is contra to the output direction. Other ratio is optional.
- 该系列传动装置可根据用户需要选配不同形式的液压马达,并可根据实际工况组合各种功能模块。
- Allowing fitted with different type motors and manifolds for relevant actual application.
- 根据应用场合不同,减压传动装置的使用选型也有所变化,详情请咨询本公司相关技术人员。
- Differently sized units and additional design variants can be furnished if requested.

IGC550



技术参数

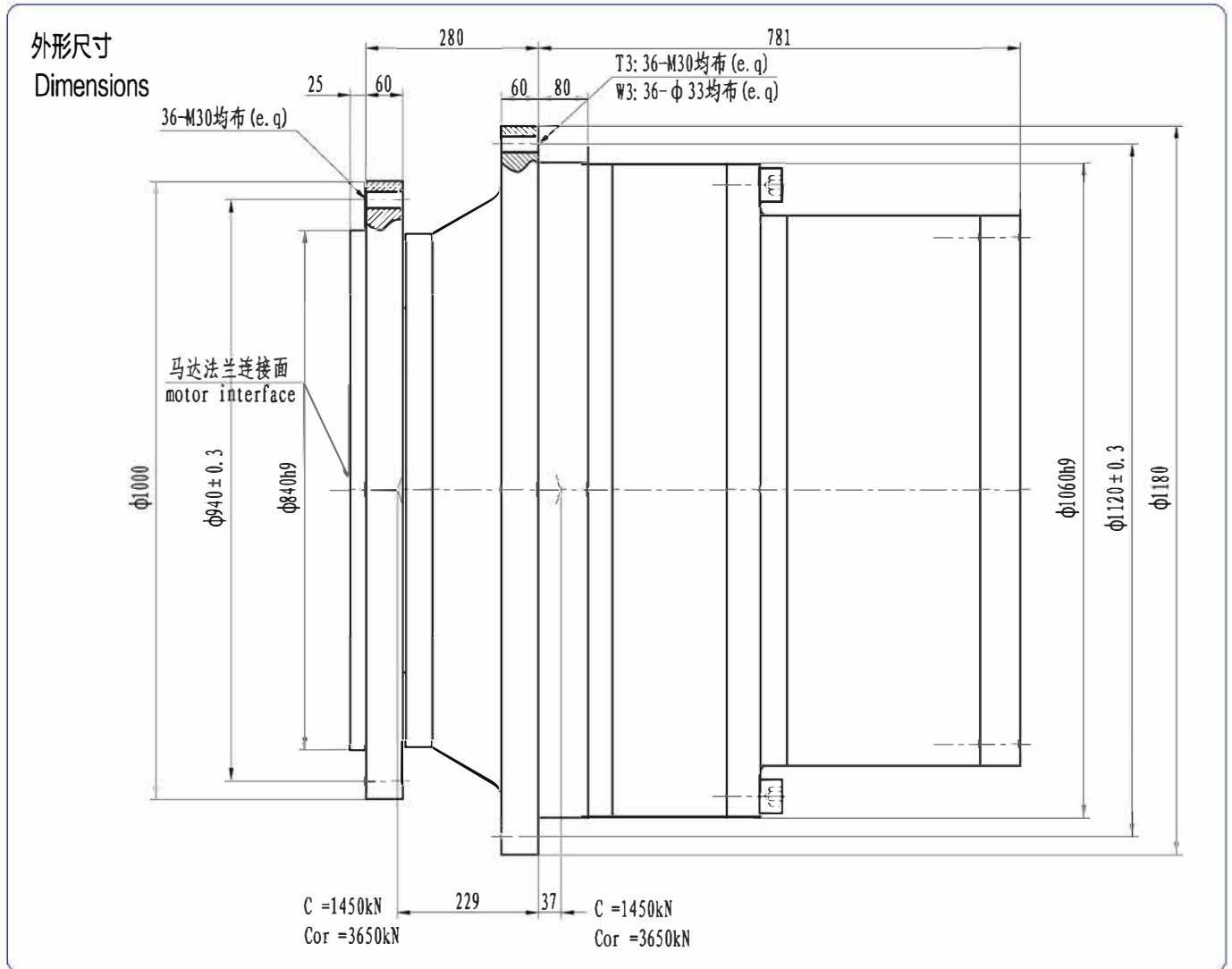
Technical Data

系列代号 Serial code	最大输出扭矩 Output Torque T_{max} , Nm	传动比 Ratio i	液压马达 Hydraulic Motor		最高输入转速 Max. Input Speed r/min	最大制动力矩 Braking Torque $T_{Br max}$, Nm	制动器工作压力 Brake Press. MPa	重量 Weight = kg
IGC550W3	460000	102.2 · 122.9 · 185.2 · 226.7	A2FB180 A2FE250 A2FE355 A2FM250 A2FM500	A6VE250 A6VM200 A6VM355 A4VM355 A4VM500	4000	3200	1.8-5	2235

- 减速机输入转向与输出转向相反,除表中所列传动比外,对有批量的产品传动比可以另选。
- Gearbox input direction is contra to the output direction. Other ratio is optional.
- 该系列传动装置可根据用户需要选配不同形式的液压马达,并可根据实际工况组合各种功能阀块。
- Allowing fitted with different type motors and manifolds for relevant actual application.
- 根据应用场合不同,液压传动装置的使用选型也有所变化,详情请咨询本公司相关技术人员。
- Differently sized units and additional design variants can be furnished if requested.



● IGC880



技术参数

Technical Data

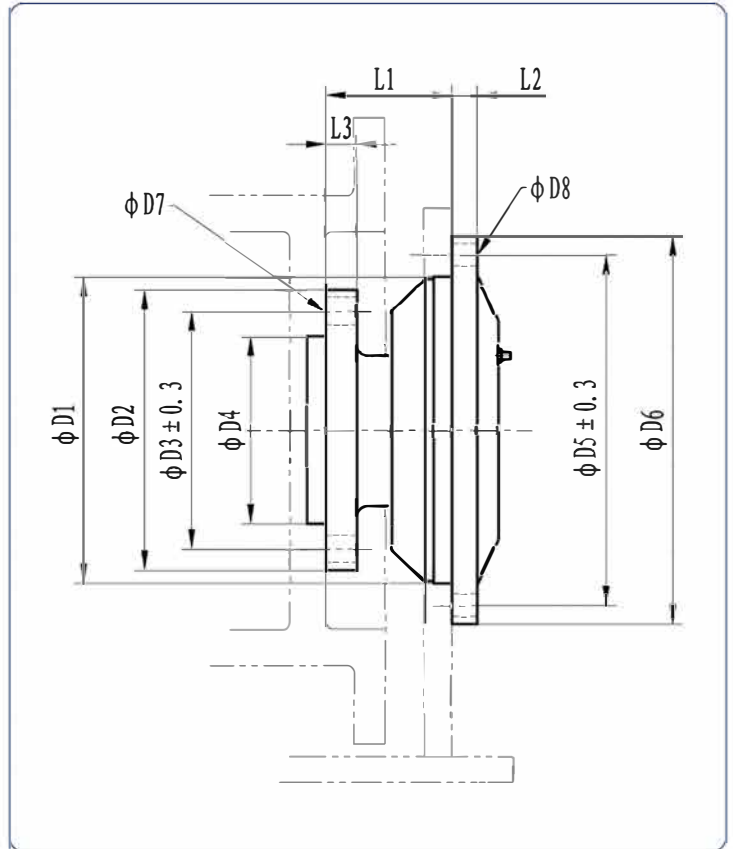
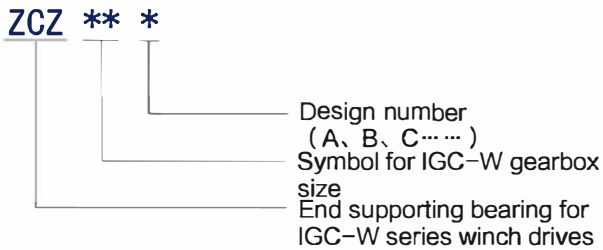
系列代号 Serial code	最大输出扭矩 Output Torque T_{max} , Nm	传动比 Ratio i	液压马达 Hydraulic Motor		最高输入转速 Max. Input Speed r/min	最大制动扭矩 Braking Torque $T_{br. max}$, Nm	制动器工作压力 Brake Press. MPa	重量 Weight kg
IGC880T3	880000	127.1 · 179.6 · 236.2 · 293.7	A2FE180	A6VE250	4000	3200	1.8-5	4350
			A2FE250	A6VM200				
IGC880W3	750000		A2FE355	A6VM355				
			A2FM250	A4VM355				
			A2FM500	A4VM500				

- 减速机输入转向与输出转向相反, 除表中所列传动比外, 对有批量的产品传动比可以另选。
- Gearbox input direction is contra to the output direction. Other ratio is optional.
- 该系列传动装置可根据用户需要选配不同形式的液压马达, 并可根据实际工况组合各种功能阀块。
- Allowing fitted with different type motors and manifolds for relevant actual application.
- 根据应用场合不同, 液压传动装置的使用选型也有所变化, 详情请咨询本公司相关技术人员。
- Differently sized units and additional design variants can be furnished if requested.

THIS PAGE IS LEFT BLANK

● IGC-W End Supporting Bearing Series

Model Options



Dimensions

Model	D1	D2	D3	D4	D5	D6	D7	D8	L1	L2	L3	Gearbox Size
ZCZ17	140h7	136	115	90j6	157	175	12-φ13	6-φ9	76	10	13	IGC13W IGC17W IGC24W
ZCZ17A	175h7	156	130	100j6	200	225	8-φ13	6-φ11	111	15	15	
ZCZ36	200h7	175	145	115j6	230	260	8-φ18	8-φ18	91	15	20	
ZCZ36A	200h7	199	170	140j6	230	260	12-φ18	12-φ14	155	10	20	IGC26W IGC36W
ZCZ80	225h7	224	190	150j6	260	290	12-φ22	6-φ18	91	17	25	
ZCZ80A	225h7	224	190	150j6	260	290	8-φ22	8-φ18	101	20	15	IGC60W IGC80W
ZCZ110	260j6	258	220	180j6	295	330	12-φ22	8-φ18	102	20	25	
ZCZ110A	225j6	204	170	140j6	260	290	12-φ22	12-φ18	170	20	25	IGC110W IGC180W IGC220W

THIS PAGE IS LEFT BLANK



● IGC – J Series Planetary Gearbox by Axial Rotating

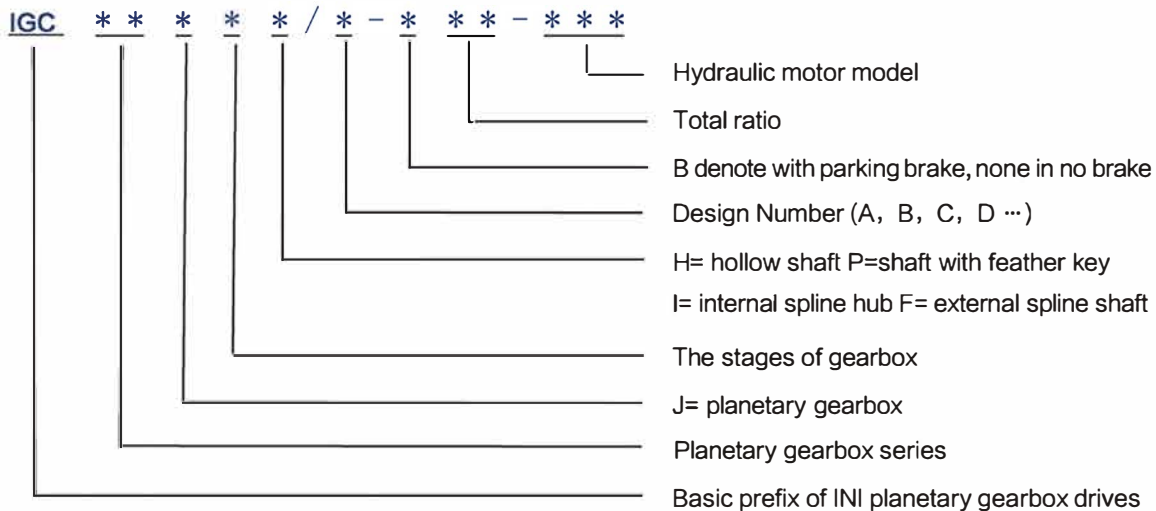
1. Brief Introduction

The IGC–J Series Planetary Gearbox by Axial Rotating are ideal transmission components that have proved successful in a wide range of operating conditions. Based on long years of experience and wide spectrum of products and applications, we know exactly what industrial requirement planetary gearboxes must meet. The series have many specific advantages: compact design, good reliability, long service life, and high mechanical efficiency. Combined with various hydraulic motor or electrical motor, the series can be used in all applications where high torques are required at low speed rates as mechanical torque increasing elements. The quality management systems of company conform to ISO9001:2000 and guarantor of a consistently high quality level. The team of R&D , design and sales engineers makes sure that the clients ’ wishes and concepts are quickly translated into technically and economically viable solutions.

The series described in this catalog are constantly reviewed standard type. Other design variants with different ratio, dimensions and power characteristics are available if so requested for specific applications.

The series have been widely applied in double roll squeezer, rubbish shredder, bucket wheel machine, belt conveyor, or wheel and crawler for providing high torques. They also have used in metallurgy, steel, sugar, recycling and environment equipment. So the series not only widely have been used by domestic important customer in relative field, but also have been exported to Southeast Asia, Middle East, India, Netherlands, Australia and Russia and so on.

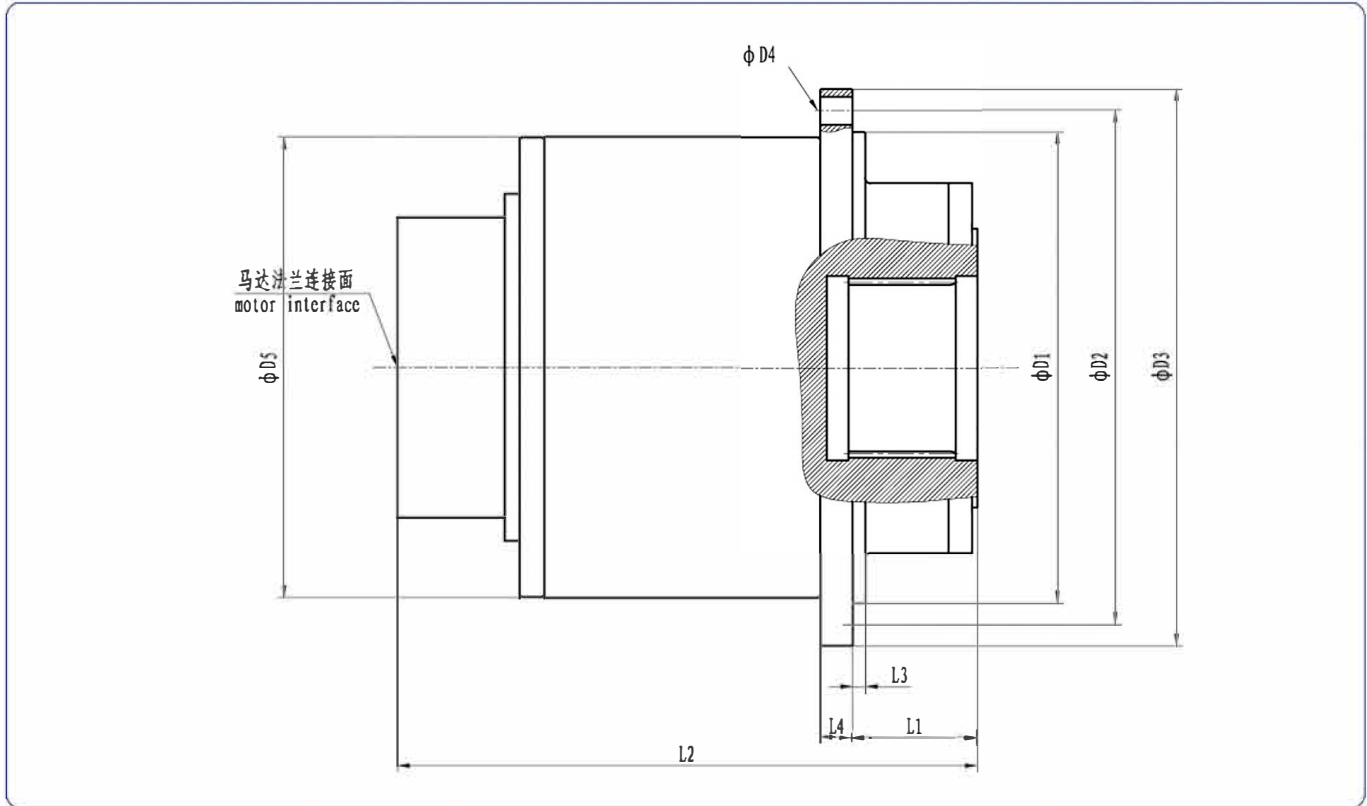
2. Model Options



3. Options Example

IGC80J3–B100–A2FE107/6.1WVAL10 represents that the series planetary gearbox is 80 with maximum output torque of 67kNm, design number B, three stages with a total ratio of 100 and a multi–disc parking brake, and could be fitted with axial piston hydraulic motor of A2FE107/6.1WVAL10.

● IGC - J



系列代号 Serial code	最大输出扭矩 Output Torque T _{max} Nm	传动比 Ratio i	液压马达 Hydraulic Motor				D1	D2	D3	D4	D5	L1	L2	L3	L4
IGC60J3	42500	87.5 · 95.8 · 106.5 · 120.8 · 140.9 · 170.9	A2FE80 A2FE90 A2FE107 A2FE125	A2FM80 A2FM90 A2FM107 A2FM125	INM1 INM2 INM3	HMB010 HMB030 HMB045	380h8	410	440	20xφ22	370	84	419	30	30
IGC80J3	67000	77.7 · 100 · 111.9 · 127.9 · 150.9 · 186.4	A2FE107 A2FE125 A2FE160 A2FE180	A2FM90 A2FM107 A2FM125 A2FM160	INM2 INM3 INM4	HMB030 HMB045 HMB060	440h8	480	520	20xφ26	430	116	541	12	30
IGC110J3	100000	96.8 · 115.8 · 129.6 · 148.2 · 174.9	A2FE107 A2FE125 A2FE160 A2FE180	A2FM80 A2FM107 A2FM125 A2FM160	INM3 INM4 INM5	HMB060 HMB080 HMB100 HMB125	470h8	500	540	36xφ20	460	101	553	15	30
IGC160J3	140000	89 · 94.6 · 101.3 · 109.2 · 119.1 · 131.5 · 162.8	A2FE160 A2FE180 A4FM250 A4FM500	A2FM200 A2FM250 A2FM355 A2FM500	INM4 INM5 INM6	HMB100 HMB125 HMB150 HMB200	545h9	600	650	30xφ26	535	138	584	15	30
IGC220J3	200000	89.3 · 96.5 · 105.4 · 116.5 · 121.8 · 146.4 · 189.9	A2FE160 A2FE180 A4FM250 A4FM500	A2FM200 A2FM250 A2FM355 A2FM500	INM5 INM6 INM7	HMB125 HMB150 HMB200 HMB270	610h9	680	735	24xφ33	610	85	587	23	45
IGC550J4	410000	645.45	A2FE160 A2FE180 A4FM250 A4FM500	A2FM200 A2FM250 A2FM355 A2FM500	A6VM160 A6VM200 A6VM250 A6VM355		810h8	850	900	36xφ33	798	463.5	1013.5	45	50

THIS PAGE IS LEFT BLANK



● IGC–BB Series Planetary Gearbox with Dual Brakes

1. Description

The IGC–BB drive series added brake on the basis of the IGC drive series, widely used in wheeled walking equipment. Advanced design experience and modern fabrication processes warrant outstanding load carrying capacity and operational safety.

2. Special Features

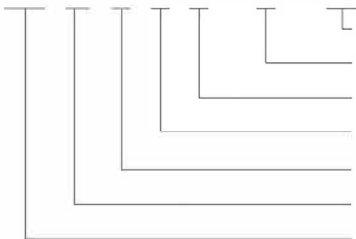
- High performance
- 3–5 Planetary wheels per stage
- Different ratios
- Integrated disc–brake
- High availability by highest teeth and production quality

3. Proven application

- Wheel drives
- Reel and winch drives

4. Model Options

IGC ** T * BB – * – ***

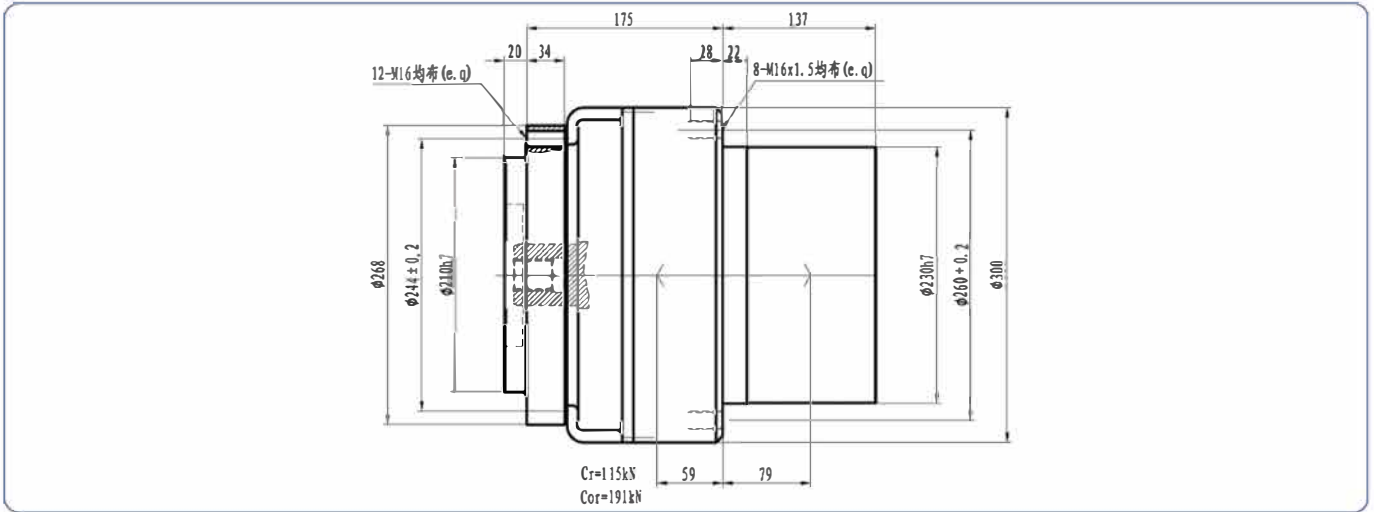


- Hydraulic motor or electromotor model
- Total ratio
- BB–double brakes
- The stages of gearbox
- T=travel drives
- Hydrostatic drives series
- Basic prefix of INI hydrostatic drives

5. Options Example

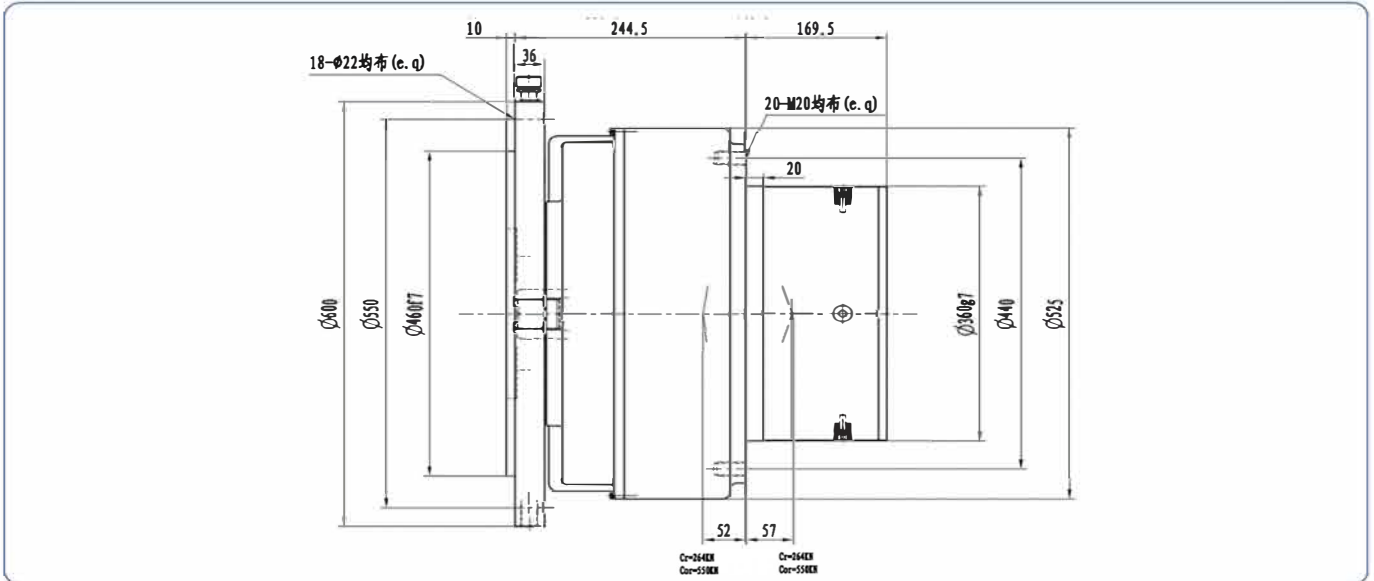
IGC9T2–BB27.93–A2FE80/6.1WVAL10 represents that the series drive is 36 with maximum output torque of 9kNm two stages planetary gearbox with a total ratio of 27.93 and double brakes and could be fitted with axial piston hydraulic motor of A2FE80/6.1WVAL10.

● IGC9T2-BB



最大输出扭矩 Output Torque T_{max} Nm	传动比 Ratio i	最高输入转速 Max. Input Speed r/min	驻车制动扭矩 Parking Brake Torque $T_{Br. max.}$ Nm	驻车制动器压力 Parking Brake Press. MPa	行车制动扭矩 Working Brake Torque $T_{Br. max.}$ Nm	行车制动器压力 Working Brake Press. MPa
9000	27.93	8000	200	2-5	6500	8

● IGC36T2-BB



最大输出扭矩 Output Torque T_{max} Nm	传动比 Ratio i	最高输入转速 Max. Input Speed r/min	驻车制动扭矩 Parking Brake Torque $T_{Br. max.}$ Nm	驻车制动器压力 Parking Brake Press. MPa	行车制动扭矩 Working Brake Torque $T_{Br. max.}$ Nm	行车制动器压力 Working Brake Press. MPa
30000	23 · 33 · 37 · 45.3	5000	430	2-5	32000	10.6

THIS PAGE IS LEFT BLANK

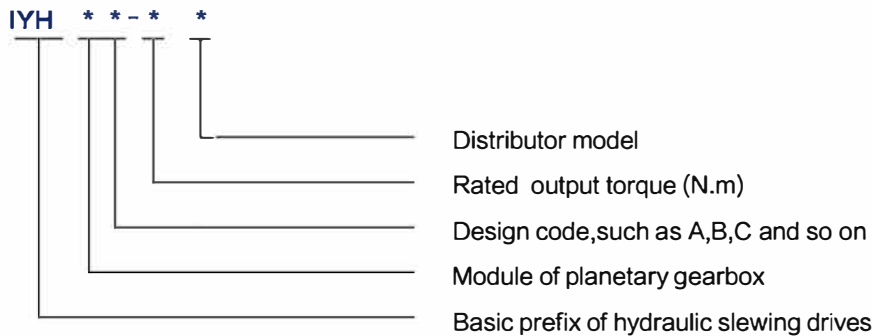


● IYH series Hydraulic Slewing Drives

1. Brief Introduction

IYH series hydraulic slewing drives are self-developed with independent intellectual property rights. And they are mainly consist of hydraulic motor, multi-disc hydraulic brake, C type planetary gearbox and distributor. hydraulic motor can choose different distributor according to the working conditions, such as counterbalance valve, overload valve, shuttle valve, speed control directional valve and other function's valve. This series hydraulic slewing drives featured compact and elegant figure, small size and light weight, and a high efficiency and power, low noise and good operating performance. Therefore, the series hydraulic slewing drives have been widely used in mobile crane, vehicle crane, aerial platform, tracked vehicle and so on. IYH series hydraulic slewing drives have been well sold in China company such as SANY, and also have been exported to the USA, Japan, Australia, Russia, Austria, Netherlands, Indonesia, Korea and other areas in the world.

2. Model Options



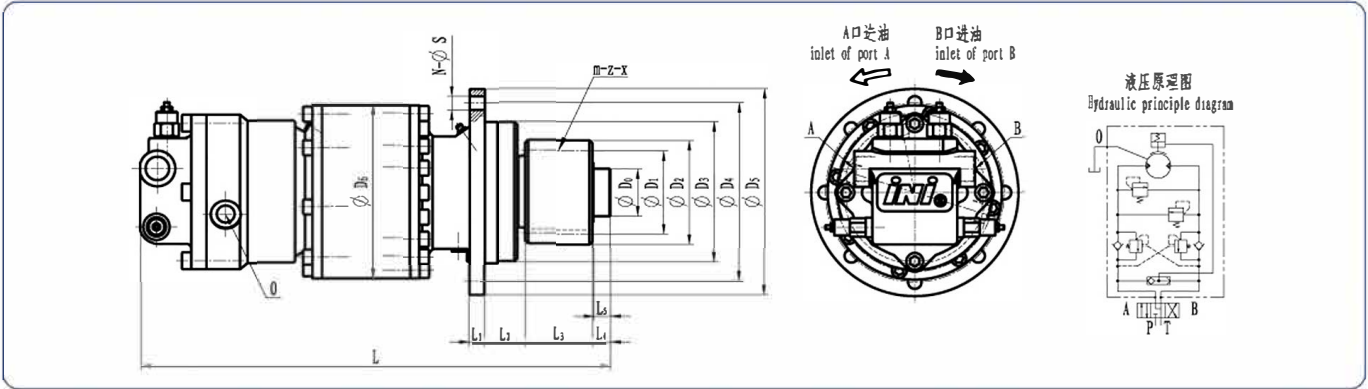
3. Options Example

IYH22A-1500D120221 represents that the hydraulic slewing drives adopts two levels planetary gearbox, and the modules of the gearbox are 2 and 2 respectively, the design code is A, the rated output torque is 1500N.m, distributor model is D120221.

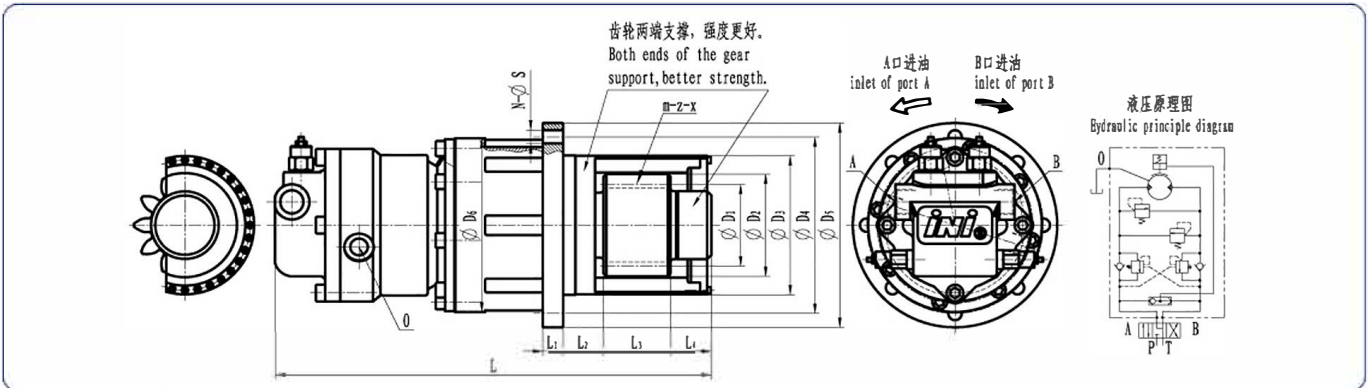
4. Parameter description

- a. Total displacement represents the capacity of oil supply per revolution.
- b. Flow of oil supply indicates theoretical flow of pump when the volumetric efficiency is considered as 90%–94%.

● IYH22/IYH33



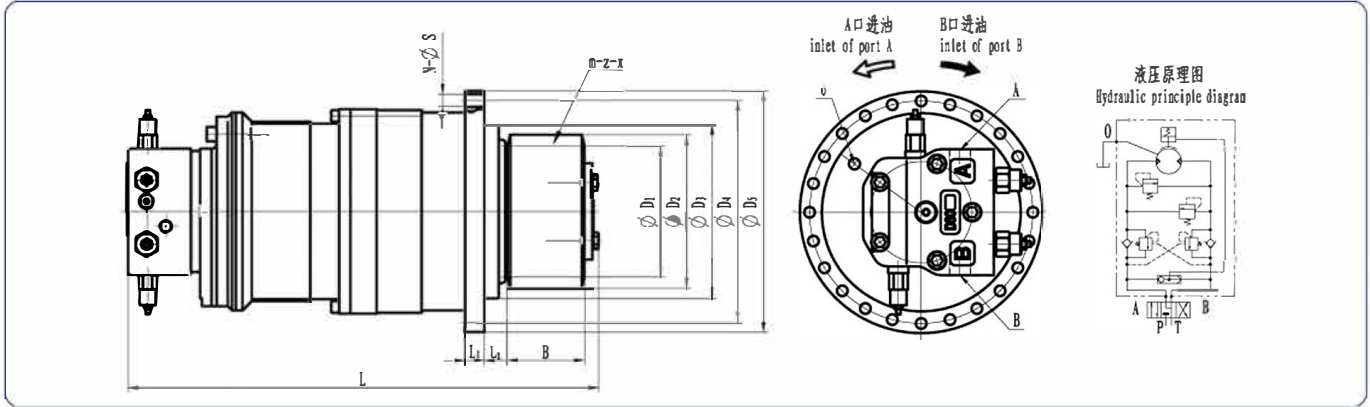
系列代号 Serial code	额定输出扭矩 Rated torque (N.m)	额定输出转速 Rated Speed (N.m)	总排量 Total displacement (ml/r)	工作压力 Working pressure (MPa)	供油流量 Supply oil flow (MPa)	减速器型号(传动比) Gearbox model (Ratio)	输出齿轮参数 Gear parameters	外形尺寸及油口规格 Overall dimensions and oil ports specifications															
								m	z	x	Do	D1	D2	D3	D4	D5	D6	L1	L2	L3	L4	L5	L
IYH22-A	1500 ~ 3000	0 ~ 12	2857.5	6 ~ 11	40	C22 (i=22.86)	6 13 0.5 -	78	96	130	165	200	188	16	50	70	-	-	476	12	13	G3/4"	G1/2"
IYH22-B	1500 ~ 3000	0 ~ 12	2857.5	6 ~ 11	40	C22 (i=22.86)	8 11 0.5 -	88	110	130	165	200	188	16	50	88	-	-	506	12	13	G3/4"	G1/2"
IYH22-C	1500 ~ 3000	0 ~ 12	2857.5	6 ~ 11	40	C22 (i=22.86)	8 12 0.5 -	96	118	130	165	200	188	16	50	61	-	-	467	12	13	G3/4"	G1/2"
IYH22-D	1500 ~ 3000	0 ~ 12	2857.5	6 ~ 11	40	C22 (i=22.86)	8 13 0.5 -	104	126	130	165	200	188	16	50	70	-	-	476	12	13	G3/4"	G1/2"
IYH22-E	3500 ~ 5000	0 ~ 14	2683	10 ~ 14	44	C22 (i=26.83)	6 17 0.5 50	102	119	150	190	220	185	16	43.5	60	19	18	488	8	14.5	G3/4"	G1/2"
IYH22-F	3500 ~ 5000	0 ~ 14	2683	10 ~ 14	44	C22 (i=26.83)	8 11 0.5 50	88	110	150	190	220	185	16	43.5	72	19	18	500	8	14.5	G3/4"	G1/2"
IYH22-G	3500 ~ 5000	0 ~ 14	2683	10 ~ 14	44	C22 (i=26.83)	8 13 0.5 50	104	126	150	190	220	185	16	43.5	80	19	18	508	8	14.5	G3/4"	G1/2"
IYH22-H	3500 ~ 5000	0 ~ 14	2683	10 ~ 14	44	C22 (i=26.83)	10 11 0.5 50	110	140	150	190	220	185	16	43.5	80	19	18	508	8	14.5	G3/4"	G1/2"
IYH33-A	4000 ~ 6600	0 ~ 20	2325 ~ 3726	13 ~ 16	88	C33 (i=18.6)	8 11 0.5 -	88	112	170	221	245	224	20	70	90	-	-	605	20	12.5	G3/4"	G1/2"
IYH33-B	4000 ~ 6600	0 ~ 20	2325 ~ 3726	13 ~ 16	88	C33 (i=18.6)	8 15 0.5 -	120	144	170	221	245	224	20	70	90	-	-	605	20	12.5	G3/4"	G1/2"
IYH33-C	4000 ~ 6600	0 ~ 20	2325 ~ 3726	13 ~ 16	88	C33 (i=18.6)	10 12 0.5 -	120	149	170	221	245	224	20	70	90	-	-	605	20	12.5	G3/4"	G1/2"
IYH33-D	4000 ~ 6600	0 ~ 20	2325 ~ 3726	13 ~ 16	88	C33 (i=18.6)	10 13 0.5 -	130	159	170	221	245	224	20	70	90	-	-	605	20	12.5	G3/4"	G1/2"
IYH33-E	7000 ~ 12000	0 ~ 12	5296 ~ 6620	12 ~ 16	92	C33 (i=33.1)	10 13 0.5 -	130	160	200	250	280	280	20	41	90	-	-	655	24	13.5	G3/4"	G1/2"
IYH33-F	7000 ~ 12000	0 ~ 12	5296 ~ 6620	12 ~ 16	92	C33 (i=33.1)	10 15 0.5 -	150	180	200	250	280	280	20	41	100	-	-	655	24	13.5	G3/4"	G1/2"
IYH33-G	7000 ~ 12000	0 ~ 12	5296 ~ 6620	12 ~ 16	92	C33 (i=33.1)	12 13 0.5 -	156	192	200	250	280	280	20	41	100	-	-	665	24	13.5	G3/4"	G1/2"



系列代号 Serial code	额定输出扭矩 Rated torque (N.m)	额定输出转速 Rated Speed (N.m)	总排量 Total displacement (ml/r)	工作压力 Working pressure (MPa)	供油流量 Supply oil flow (MPa)	减速器型号(传动比) Gearbox model (Ratio)	输出齿轮参数 Gear parameters	外形尺寸及油口规格 Overall dimensions and oil ports specifications													
								m	z	x	D1	D2	D3	D4	D5	D6	L1	L2	L3	L4	L
IYH22-I	3500 ~ 5000	0 ~ 14	2683	10 ~ 14	44	C22 (i=26.83)	6 17 0.5 102	119	150	190	220	187	22	43.5	60	56	469	8	14.5	G3/4"	G1/2"
IYH22-J	3500 ~ 5000	0 ~ 14	2683	10 ~ 14	44	C22 (i=26.83)	8 11 0.5 88	110	150	190	220	187	22	43.5	72	44	469	8	14.5	G3/4"	G1/2"
IYH22-K	3500 ~ 5000	0 ~ 14	2683	10 ~ 14	44	C22 (i=26.83)	8 13 0.5 104	126	150	190	220	187	22	43.5	80	44	477	8	14.5	G3/4"	G1/2"



● IYH2.5~IYH79



系列代号 Serial code	额定输出扭矩 Rated torque (N.m)	额定输出转速 Rated Speed (r/min)	总排量 Total displacement (ml/r)	工作压力 Working pressure (MPa)	传动比 Ratio	输出齿轮参数 Gear parameters						外形尺寸及油口规格 Overall dimensions and oil ports specifications									
						m	z	x	B	D1	D2	D3	D4	D5	L1	L2	L	N	S	A, B	O
IYH2.5-A	800~2000	0~120	430~1057	16	5/5.5/7	5	17	0.5	70	85	99.5	180	230	250	20	24	478	24	11	M22x1.5	G1/4"
IYH2.5-B	800~2000	0~120	430~1057	16	5/5.5/7	6	17	0.5	60	102	118.8	180	230	250	20	24	468	24	11	M22x1.5	G1/4"
IYH2.5-C	800~2000	0~120	430~1057	16	5/5.5/7	8	17	0.5	54	136	159.04	180	230	250	20	24	462	24	11	M22x1.5	G1/4"
IYH2.5-D	800~2000	0~120	430~1057	16	5/5.5/7	12	13	0.5	80	156	191.64	180	230	250	20	24	488	24	11	M22x1.5	G1/4"
IYH2.53-A	3000~6500	0~32.5	1720~3320	16	20/28	6	17	0.5	60	102	118.8	250	290	320	20	75	565	16	17	M22x1.5	G1/4"
IYH2.53-B	3000~6500	0~32.5	1720~3320	16	20/28	8	15	0.63	80	120	145.63	250	290	320	20	75	585	16	17	M22x1.5	G1/4"
IYH2.53-C	3000~6500	0~32.5	1720~3320	16	20/28	10	13	0.5	85	130	160	250	290	320	20	75	590	16	17	M22x1.5	G1/4"
IYH3-A	2600~5316	0~100	1344~2711.5	16	5/5.5/7	6	17	0.5	60	102	118.8	235	252	270	38	90.5	483	24	10.5	M22x1.5	G1/2"
IYH3-B	2600~5316	0~100	1344~2711.5	16	5/5.5/7	8	15	0.5	60	120	143.24	235	252	270	38	90.5	483	24	10.5	M22x1.5	G1/2"
IYH3-C	2600~5316	0~100	1344~2711.5	16	5/5.5/7	10	12	0.63	80	120	149	235	252	270	38	90.5	503	24	10.5	M22x1.5	G1/2"
IYH3-D	2600~5316	0~100	1344~2711.5	16	5/5.5/7	12	15	0.65	90	180	216.39	235	252	270	38	90.5	513	24	10.5	M22x1.5	G1/2"
IYH4-A	4873~10886	0~90	2430~5428.5	16	5/5.5/7	10	17	0.6	85	170	200.64	330	370	400	24.5	123	625	24	17	M33x2	G1/2"
IYH4-B	4873~10886	0~90	2430~5428.5	16	5/5.5/7	12	13	0.5	100	156	191.5	330	370	400	24.5	123	640	24	17	M33x2	G1/2"
IYH4-C	4873~10886	0~90	2430~5428.5	16	5/5.5/7	14	15	0.5	100	210	250.58	330	370	400	24.5	123	640	24	17	M33x2	G1/2"
IYH4-D	4873~10886	0~90	2430~5428.5	16	5/5.5/7	16	12	0.5	100	192	238.4	330	370	400	24.5	123	640	24	17	M33x2	G1/2"
IYH5-A	13195~22136	0~40	6580~11038.5	16	5/5.5/7	12	18	0.564	85	216	252.03	400	432	460	22	179	979	24	17	Φ50	G1/2"
IYH5-B	13195~22136	0~40	6580~11038.5	16	5/5.5/7	14	15	0.5	100	210	250.58	400	432	460	22	179	994	24	17	Φ50	G1/2"
IYH5-C	13195~22136	0~40	6580~11038.5	16	5/5.5/7	16	12	0.5	100	192	237.92	400	432	460	22	179	994	24	17	Φ50	G1/2"
IYH6-A	25197~33540	0~35	12565~16725.5	16	5/5.5/7	16	17	0.5	150	272	320	495	525	565	35	235	1215	24	21	Φ50	G1/2"
IYH6-B	25197~33540	0~35	12565~16725.5	16	5/5.5/7	20	15	0.5	160	300	359.6	495	525	565	35	235	1225	24	21	Φ50	G1/2"
IYH34-A	12000~18000	0~5.5	6622~11165	16	38.5	12	12	0.5	100	144	180	330	370	400	40	125.5	663	24	17	M33x2	G1/4"
IYH34-B	12000~18000	0~5.5	6622~11165	16	38.5	14	14	0.5	100	196	236.6	330	370	400	40	125.5	663	24	17	M33x2	G1/4"
IYH45-A	13000~25000	0~22	7028~13804	16	28	12	14	0.5	90	168	202.8	426	455	490	25	94	770	32	21	M33x2	G1/2"
IYH45-B	13000~25000	0~22	7028~13804	16	28	14	15	0.5	100	210	250.58	426	455	490	25	94	780	32	21	M33x2	G1/2"
IYH45-C	13000~25000	0~22	7028~13804	16	28	16	12	0.5	100	192	237.92	426	455	490	25	94	780	32	21	M33x2	G1/2"
IYH56-A	32740~61406	0~11	16660~31248	16	28	16	17	0.5	150	272	320	510	545	580	30	351	995	30	21	M33x2	G1/2"
IYH56-B	32740~61406	0~11	16660~31248	16	28	18	14	0.5	180	252	306.18	510	545	580	30	351	1025	30	21	M33x2	G1/2"
IYH56-C	32740~61406	0~11	16660~31248	16	28	20	14	0.4	194	280	329.48	510	545	580	30	351	1039	30	21	M33x2	G1/2"
IYH67-A	63000~90000	0~8	33180~45752	16	28	22	14	0.5	200	308	374	605	650	700	36	235	1465	36	25	M33x2	G1/2"
IYH67-B	63000~90000	0~8	33180~45752	16	28	20	13	0.5	180	260	320	605	650	700	36	235	1445	36	25	M33x2	G1/2"
IYH67-C	63000~90000	0~8	33180~45752	16	28	18	17	0.5	140	306	360	605	650	700	36	235	1405	36	25	M33x2	G1/2"
IYH67-D	63000~90000	0~8	33180~45752	16	28	16	15	0.5	125	240	281.5	605	650	700	36	235	1390	36	25	M33x2	G1/2"
IYH67-E	63000~90000	0~8	33180~45752	16	28	40	12	0.63	160	480	529.6	605	650	700	36	235	1385	36	25	M33x2	G1/2"
IYH79-A	110000~160000	0~10	55286~85148	16	22/28	22	14	0.5	200	308	374	760	810	850	40	449.5	1571	36	25	Φ50	G1/2"
IYH79-B	110000~160000	0~10	55286~85148	16	22/28	20	13	0.5	180	260	320	760	810	850	40	449.5	1551	36	25	Φ50	G1/2"
IYH79-C	110000~160000	0~10	55286~85148	16	22/28	18	17	0.5	140	306	360	760	810	850	40	449.5	1511	36	25	Φ50	G1/2"
IYH79-D	110000~160000	0~10	55286~85148	16	22/28	40	12	0.63	160	480	529.6	760	810	850	40	449.5	1531	36	25	Φ50	G1/2"

THIS PAGE IS LEFT BLANK



● IGH Series Hydraulic Slewing Drive

1. Brief Introduction

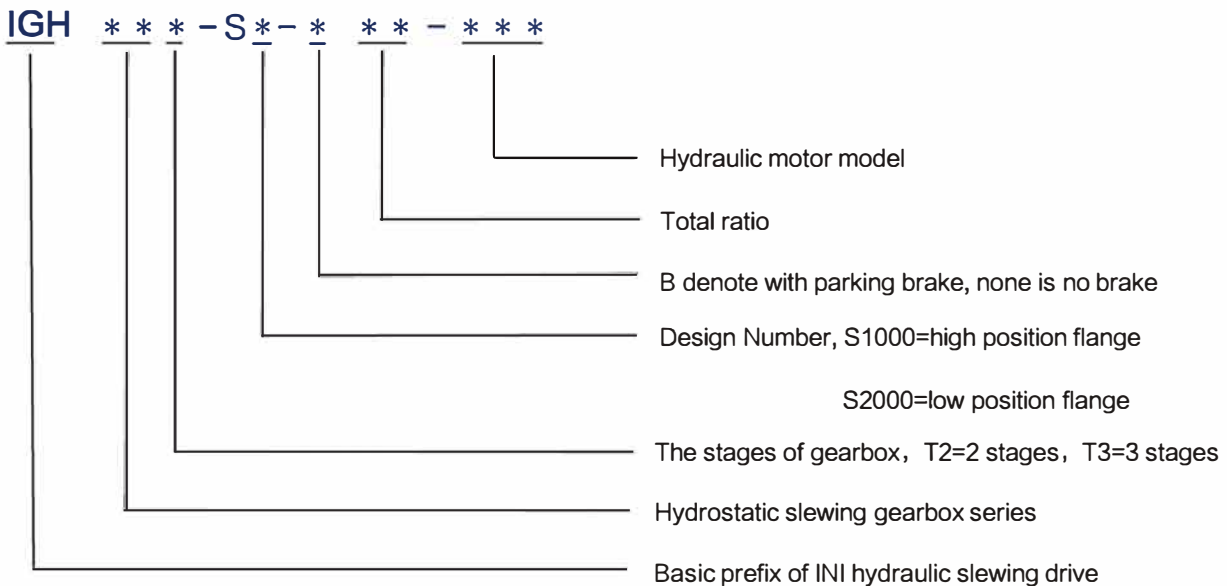
The IGH Series Hydraulic Slewing Drive are the ideal driving components for wheeled or crawler excavator, rotary drill rigs, crawler cranes and vehicle cranes, marine cranes and other mobile equipment. The series have proven their worth under arduous application conditions in the most unfavorable operating environments.

The series feature compact size, space-saving, high efficiency, long service life, integrated multiple-disk holding brake, simple mounting and maintenance. Module design and optimize gear manufacture and high quality fabrication processes ensure excellent load carrying ability and outstanding operational reliability.

The series described in this catalog are of the standard type. Other design variants with different ratio, dimensions and power characteristics are available if so requested for specific applications. We can provide specific application consultation to customers aimed at finding the optimum drive configuration at the project stage.

The drives have been widely applied in wheeled or crawler excavators, crawler cranes, rotary drill rigs, marine cranes. The drives not only widely have been used by domestic customer such as SANY, XCMG, but also have been exported to Southeast Asia, Middle East, India, South Korea, Netherlands, Germany and Russia and so on.

2. Model Options

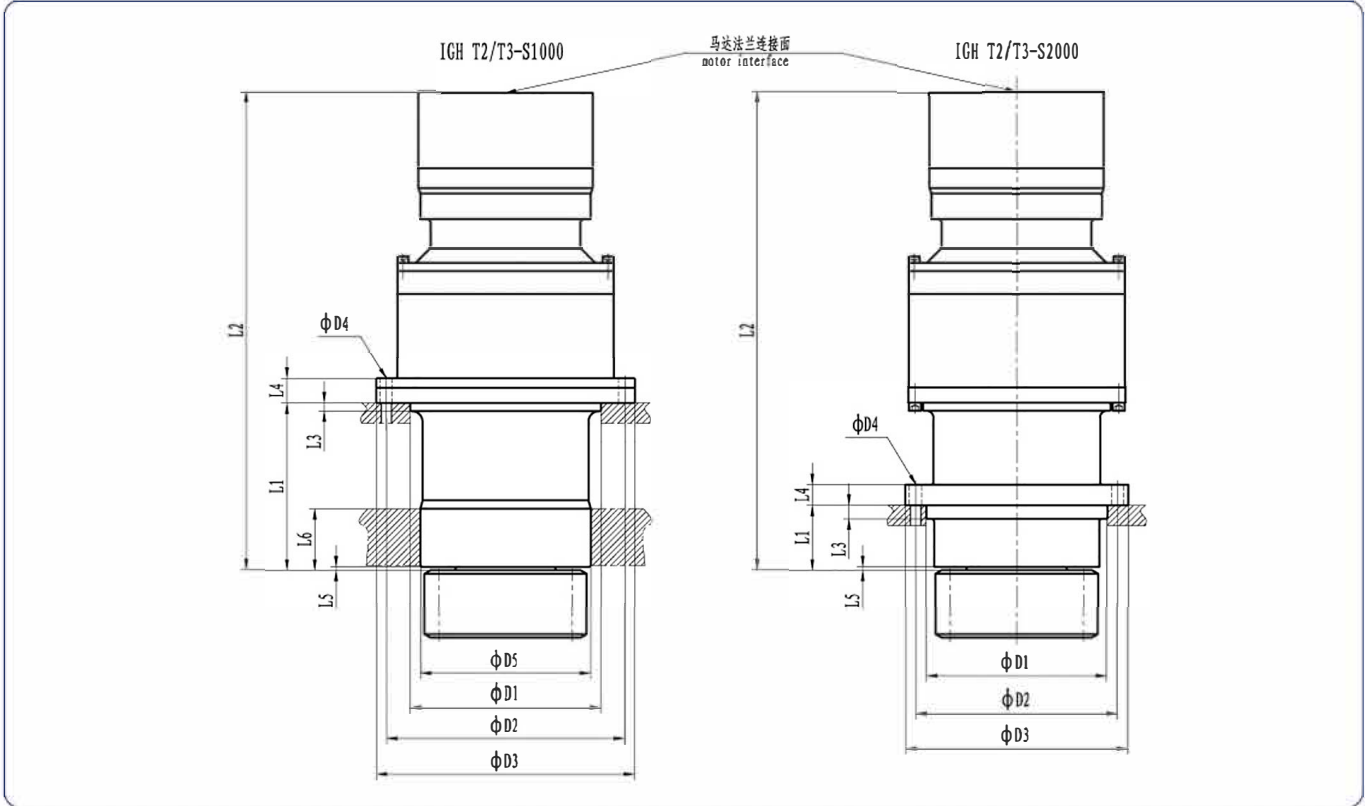


3. Options Example

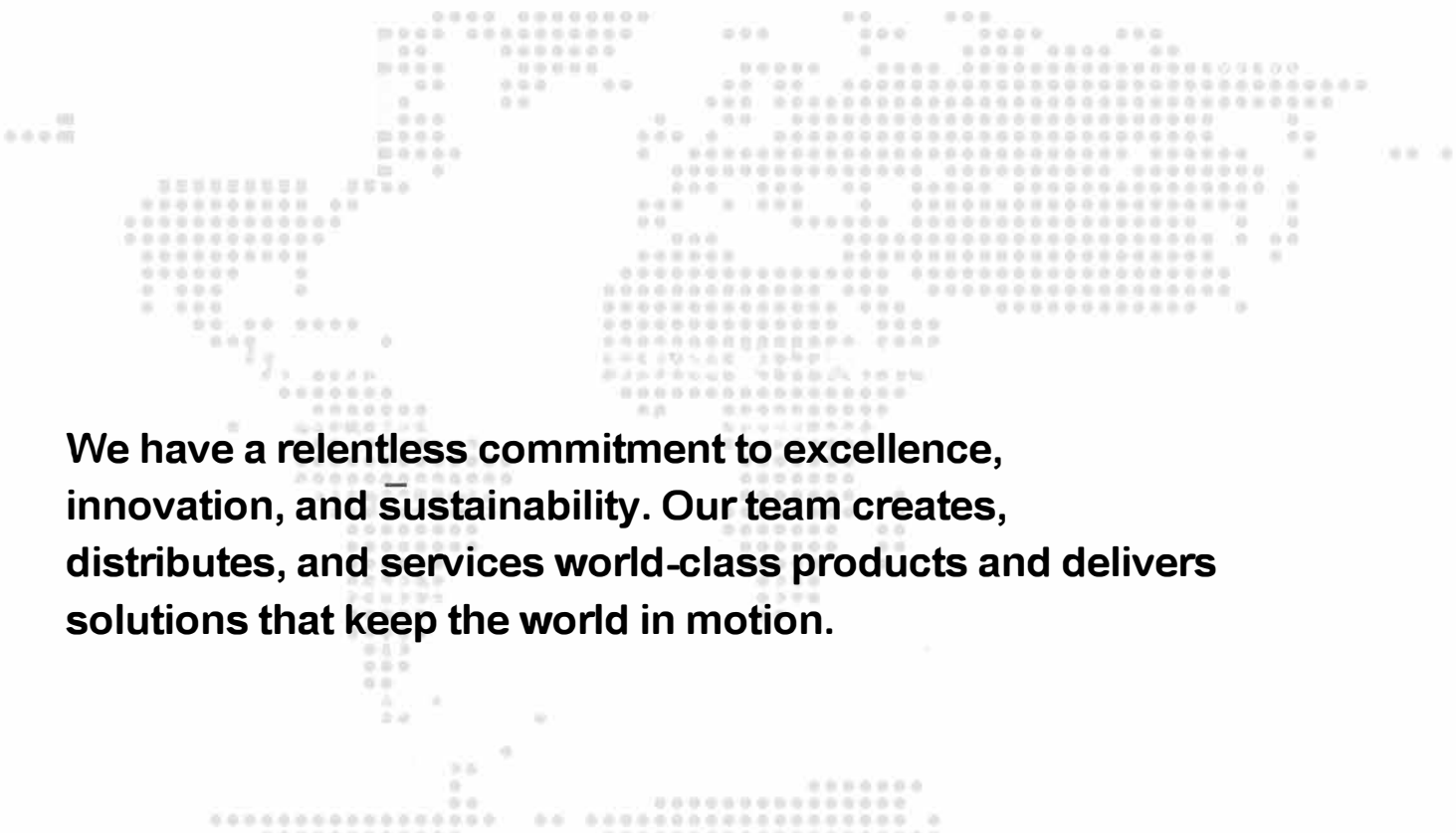
IGH17T2-S1000-B27.4-A2FE56/61WVZL represents that the series swing gearbox is 17 with maximum output torque of 12.7kNm, high position flange, two stages planetary gearbox with a total ratio of 27.4 and a multi-disc parking brake, and could be fitted with axial piston hydraulic motor of A2FE56/61WVZL.



IGH



系列代号 Serial code	最大输出扭矩 Output Torque T _{max} , Nm	传动比 Ratio i	液压马达 Hydraulic Motor				重量 Weight ≈ kg	D1	D2	D3	D4	D5	L1	L2	L3	L4	L5	L6
			A2FM45 A2FM55 A2FM63	A2FE45 A2FE56 A2FE63	H1CR45 H1CR55	HMF28 HMF35 HMF55												
IGH17T2-S1000	12700	24.7 · 27.4 · 33.1 · 38.6 · 46.4 · 55	A2FM45 A2FM55 A2FM63	A2FE45 A2FE56 A2FE63	H1CR45 H1CR55	HMF28 HMF35 HMF55	130	255f7	290	320	16x φ18	230f7	200	≈ 517	8	38	5	60
IGH17T2-S2000								230f7	258	282	20x φ13.5	-	80	≈ 517	60	38	5	-
IGH17T3-S1000	12700	65.2 · 78.9 · 89.2 · 103.6	A2FM45 A2FM55 A2FM63	A2FE45 A2FE56 A2FE63	H1CR45 H1CR55	HMF28 HMF35 HMF55	150	255f7	290	320	16x φ18	230f7	200	≈ 517	8	38	5	60
IGH17T3-S2000								230f7	258	282	20x φ13.5	-	80	≈ 517	60	38	5	-
IGH24T3-S1000	17500	91.1 · 103.6 · 121.5 · 138.2	A2FM55 A2FM63 A2FM80	A2FE56 A2FE63 A2FE80 A2FE90	H1CR55 H1CR75 H1CR90 H1CR108	HMF55 HMF75 HMF105 HMF135	150	265h8	315	355	20x φ17.5	230h8	245	≈ 598	15	34	8	75
IGH36T2-S1000	28500	18.37 · 24 · 28.93 · 45 · 49.1						A2FM55 A2FM63 A2FM80	A2FE56 A2FE63 A2FE80 A2FE90	H1CR55 H1CR75 H1CR90 H1CR108	HMF55 HMF75 HMF105 HMF135	210	280h8	350	380	20x φ18	250h8	245
IGH36T2-S2000			265h8	296	326	24x φ18	-						95	≈ 670	20	30	5	-
IGH36T3-S1000	28500	68 · 80.4 · 89.2 · 101 · 117.6 · 131.4 · 204	A2FM55 A2FM63 A2FM80	A2FE56 A2FE63 A2FE80 A2FE90	H1CR55 H1CR75 H1CR90 H1CR108	HMF55 HMF75 HMF105 HMF135	235	280h8	350	380	20x φ18	250h8	245	≈ 670	12	36	5	90
IGH36T3-S2000/1								265h8	296	326	24x φ18	-	95	≈ 670	20	30	5	-
IGH36T3-S2000/2								360h8	400	440	24x φ18	-	112	≈ 670	30	30	12	-
IGH60T3-S1000/1	48500	80.8 · 87.5 · 95.8 · 106.5 · 120.8 · 140.9 · 170.9	A2FM55 A2FM63 A2FM80	A2FE56 A2FE63 A2FE80 A2FE90	H1CR55 H1CR75 H1CR90 H1CR108	HMF55 HMF75 HMF105 HMF135	500	400h8	490	542	16x φ22	325h8	279	≈ 763	25	40	19	114
IGH60T3-S1000/2								300h8	370	410	20x φ22	-	96	≈ 775	78	30	18	-
IGH60T3-S2000								400h8	490	542	16x φ22	325h8	450	≈ 729	25	40	19	114
IGH80T3-S1000/1	68300	77.7 · 100 · 111.9 · 127.9 · 150.9 · 186.4 · 253.8	A2FM80 A2FM107 A2FM125	A2FE80 A2FE90 A2FE107 A2FE125	H1CR75 H1CR90 H1CR108	HMF75 HMF105 HMF135	620	440f7	480	515	24x φ26	370f7	314	≈ 885	14	40	21	162
IGH80T3-S1000/2								490h8	535	580	24x φ26	440h8	491	≈ 930	25	127	18	168
IGH80T3-S2000								370h8	480	530	24x φ22	-	100	≈ 885	88	55	12	-
IGH110T3-S1000	93300	96.8 · 115.8 · 129.6 · 148.2 · 174.9 · 216 · 312	A2FM125 A2FM160	A2FE107 A2FE125	HMF135 HMF165	HMF135 HMF165	645	475f7	520	570	24x φ26	440f7	449	≈ 950	20	40	20	160
IGH110T3-S2000								490f7	544	594	24x φ26	-	170	≈ 928	20	40	15	-
IGH160T3-S1000	136500	183 · 228 · 252	A2FM200	A2FE160	HMF210	HMF210	1025	545h9	600	650	30x φ26	425h9	314	≈ 986	15	40	14	184
IGH220T3-S1000	213000	98.7 · 146.4 · 189.9 · 247 · 294	A2FM250	A2FE180	HMF280	HMF280	1285	620h9	670	710	26x φ26	460h9	588	≈ 1301	20	50	10	160



We have a relentless commitment to excellence, innovation, and sustainability. Our team creates, distributes, and services world-class products and delivers solutions that keep the world in motion.

North America Sales Rep:
ZEIUSA LLC
www.zeiusa.com
info@zeiusa.com
+1 716-288-8317



info@zeiusa.com www.zeiusa.com ZEIUSA LLC